



DIVISION OF
STUDENT AFFAIRS

RESIDENTIAL FACILITIES



UNDERSTANDING FLOOR PLANS

LEARNING DAY 2024



Agenda:

- ❖ What are Plans?
- ❖ Visualization & Interpretation
- ❖ Visualization of Buildings to Plans Examples
- ❖ Types of Plans
- ❖ Understanding a Cover Sheet
- ❖ Understanding a Title Block
- ❖ Primary Elements of a Floor Plan
- ❖ Primary Elements of a Furniture Plan
- ❖ Primary Elements of a Finish Plan
- ❖ Other types of Architectural Plans
- ❖ Example of Architectural Legends & Plans
- ❖ Interpretation of Building to Plans Examples
- ❖ Structural Plans & Legends
- ❖ Mechanical Plans & Legends
- ❖ Electrical Plans & Legends
- ❖ Plumbing Plans & Legends
- ❖ Assignments



What Are Plans?

- 2 Dimensional Representation of a 4 Dimensional Building
- Graphic and technical representations that indicate how to construct a building including:
 - Building Design
 - Materials Needed
 - Equipment to be Installed
 - Installation Methods
 - Building Code Requirements
- Part of the contract documents between Owner, architect, contractors and others to identify scope of work and responsibilities



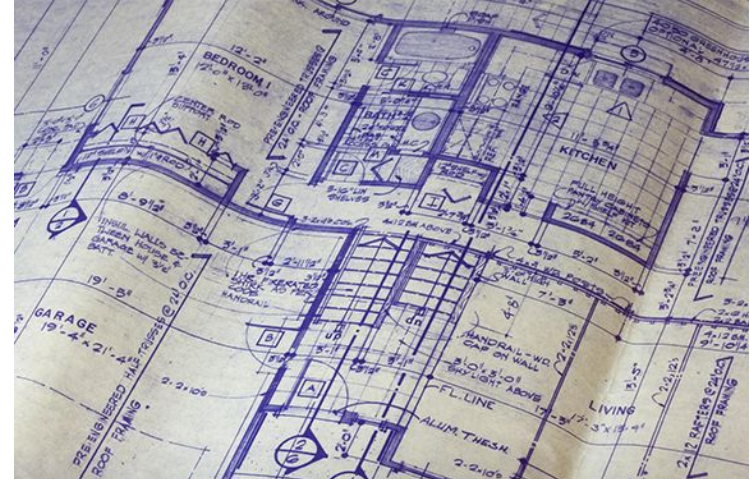


DIVISION OF STUDENT AFFAIRS

RESIDENTIAL FACILITIES

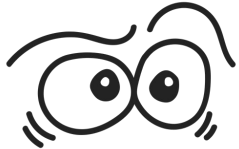
Sets of plans can also be called:

- Construction Drawings
- Blueprints
- Plans
- Drawings

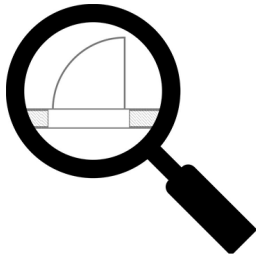




Blueprint reading is defined as the gathering of information from a print or plan and involves two principal elements: Visualization & Interpretation



Visualization is the ability to “see” or envision the size and shape of the structure from a set of plans



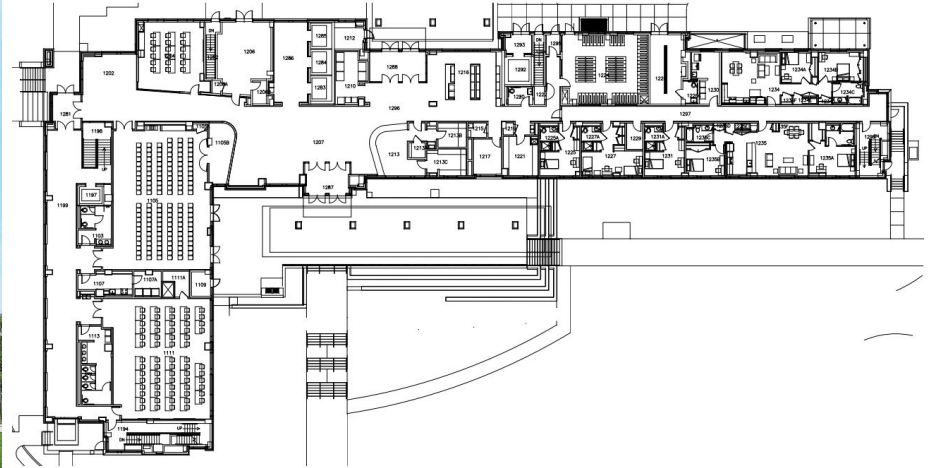
Interpretation is the ability to read lines, symbols, dimensions, notes and other information on the plan



DIVISION OF STUDENT AFFAIRS

RESIDENTIAL FACILITIES

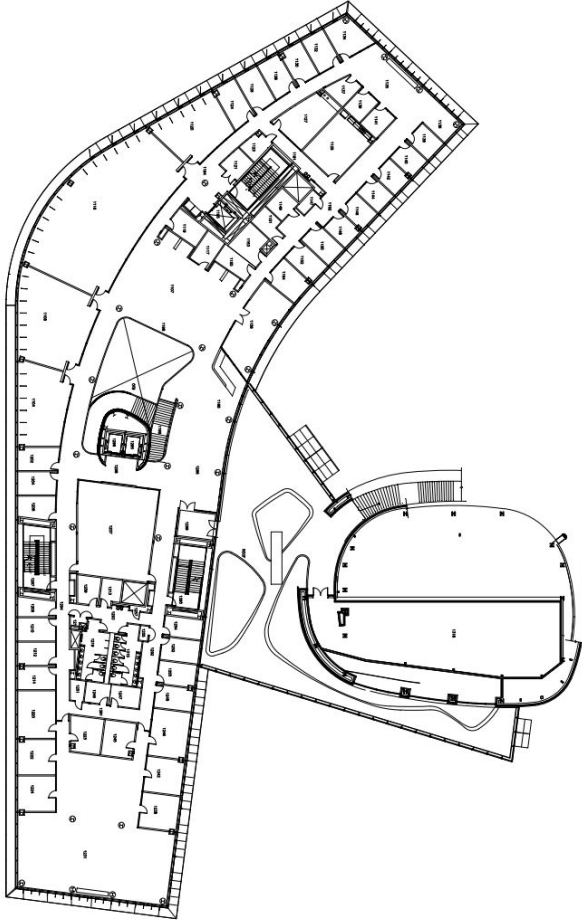
Visualization of Buildings Examples





DIVISION OF STUDENT AFFAIRS

RESIDENTIAL FACILITIES





Types of Plans:

- General Drawings (G or Cover)
- Architectural Drawings (A)
- Civil Drawings (C)
- Structural Drawings (S)
- Mechanical Drawings (M)
- Plumbing Drawings (P)
- Electrical Drawings (E)



- In addition, for large projects there may additional plans, including, but not limited to: Fire Protection, Audio/Visual, IT, and Security Plans.



Cover Sheets

Identify the Project on the Cover Sheet

- Name of the Project
- Name of the Owner
- Name of the Firm(s) that designed the project

Additional Information may include:

- Table of Contents
- Schedule of Notations & Symbols
- General Notes about the project
- List of Abbreviations





The Title Block

The Title Block is found on every sheet of a set of blueprints and includes:

- Job title and location
- Key Plan
- Project Number
- Name of the architectural/engineering firm
- Sheet number and title
- Names or initials of those who did the drawing, checking, or approving of the drawings
- Date of completion of drawings
- Scale of the drawing

W/ASHER RE EXTINGUISHER E PUSH PAD	GENERAL ENLARGED PLAN NOTES 1. COORDINATE ALL NEW WORK DIMENSIONS WITH EXISTING FIELD CONDITIONS AND AITS. 2. CONTRACTOR SHALL FOLLOW INDUSTRY BEST PRACTICES FOR ALL DISCIPLINES OF THIS PROJECT. 3. REFER TO SHEETS A401 AND A402 FOR DOOR SCHEDULE, TAGS, AND DOOR FRAME SCHEDULE. 4. REFER TO SHEETS A403 AND A404 FOR FURNITURE LAYOUT AND FURNITURE SCHEDULE. 5. REFER TO SHEET A405 AND A406 FOR PARTITION TYPES. 6. NO PRODUCTS SUBSTITUTION REFER TO GENERAL NOTE #40 ON SHEET 0001. 7. REFER TO A400 CABINET SCHEDULE FOR FINISHES.
--	---

RE-PURPOSING ELLCOTT AREA DINER ESPORTS CENTER & C&VS OFFICES																														
KEY PLAN BUILDING 257 4828 STADIUM DRIVE COLLEGE PARK, MARYLAND 20742 University of Maryland, College Park Department of Residential Facilities																														
<table border="1"> <thead> <tr> <th>NO.</th> <th>DATE</th> <th>DESCRIPTION</th> </tr> </thead> <tbody> <tr> <td>1</td> <td>10/09/2022</td> <td>SCHEMATIC DESIGN</td> </tr> <tr> <td>2</td> <td>11/09/2022</td> <td>DESIGN DEVELOPMENT</td> </tr> <tr> <td>3</td> <td>09/19/2023</td> <td>CONSTRUCTION DOCUMENTS</td> </tr> <tr> <td>4</td> <td></td> <td></td> </tr> <tr> <td>5</td> <td></td> <td></td> </tr> </tbody> </table>	NO.	DATE	DESCRIPTION	1	10/09/2022	SCHEMATIC DESIGN	2	11/09/2022	DESIGN DEVELOPMENT	3	09/19/2023	CONSTRUCTION DOCUMENTS	4			5			<table border="1"> <thead> <tr> <th>DATE</th> <th>CHECKED BY</th> </tr> </thead> <tbody> <tr> <td></td> <td>CK</td> </tr> <tr> <td>DATE:</td> <td></td> </tr> </tbody> </table>	DATE	CHECKED BY		CK	DATE:		<table border="1"> <thead> <tr> <th>PROJECT NUMBER</th> <th>DRAWING SCALE</th> </tr> </thead> <tbody> <tr> <td></td> <td></td> </tr> </tbody> </table>	PROJECT NUMBER	DRAWING SCALE		
NO.	DATE	DESCRIPTION																												
1	10/09/2022	SCHEMATIC DESIGN																												
2	11/09/2022	DESIGN DEVELOPMENT																												
3	09/19/2023	CONSTRUCTION DOCUMENTS																												
4																														
5																														
DATE	CHECKED BY																													
	CK																													
DATE:																														
PROJECT NUMBER	DRAWING SCALE																													
ENLARGED PLAN AT 1103A, 1103B, 1106, AND 1107																														
CONSTRUCTION DOCUMENTS																														
<h1>A206</h1>																														
17 OF: 175																														





PRIMARY ELEMENTS OF A FLOOR PLAN

- **WALLS:**
 - **EXTERIOR**
 - **INTERIOR**
- **WINDOWS**
- **DOORS**
- **DIMENSIONS**



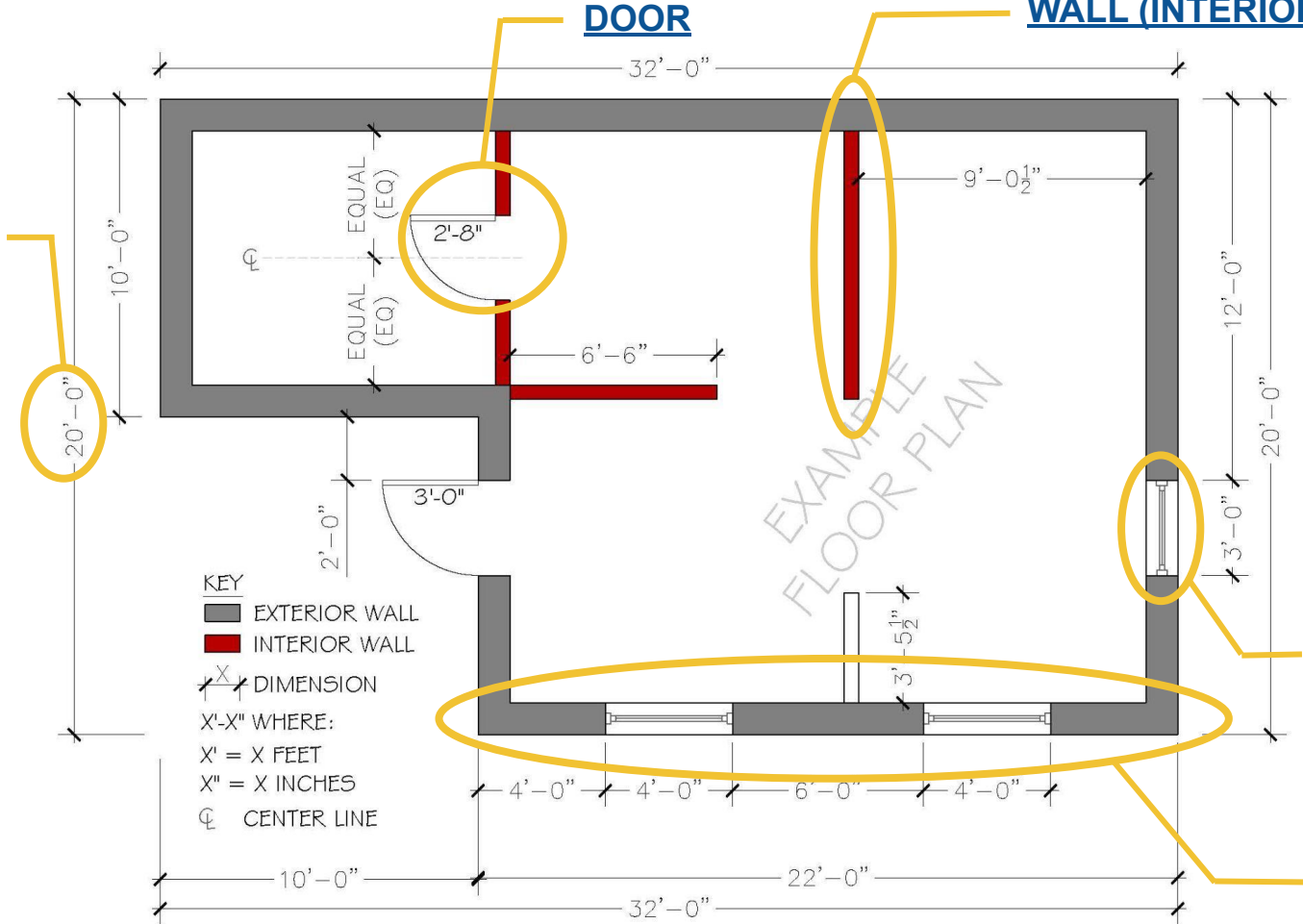
DIVISION OF STUDENT AFFAIRS

RESIDENTIAL FACILITIES

DOOR

WALL (INTERIOR)

DIMENSION (EXTERIOR)



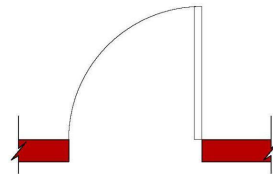
WINDOW

WALL (EXTERIOR)

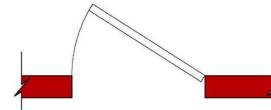


DIVISION OF STUDENT AFFAIRS

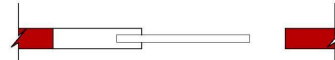
RESIDENTIAL FACILITIES



SWING DOOR 1



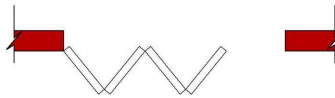
SWING DOOR 2



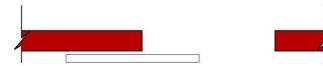
POCKET DOOR



SLIDING DOOR



FOLDING/ BI-FOLD DOOR



BARN DOOR

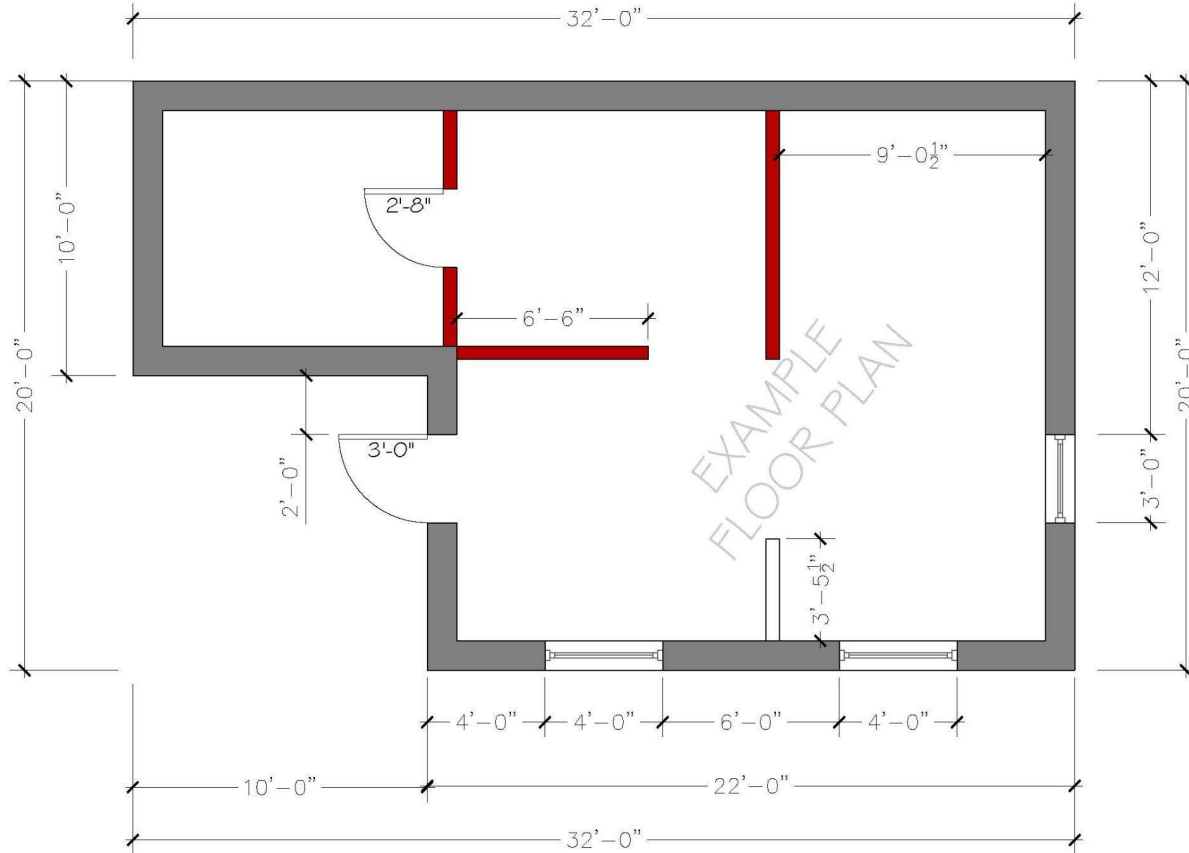
KEY

⚡ BREAK LINE (SHOWS SOMETHING CONTINUES)



DIVISION OF STUDENT AFFAIRS

RESIDENTIAL FACILITIES



FEET = (')

(SINGLE QUOTATION MARK)

INCHES = (")

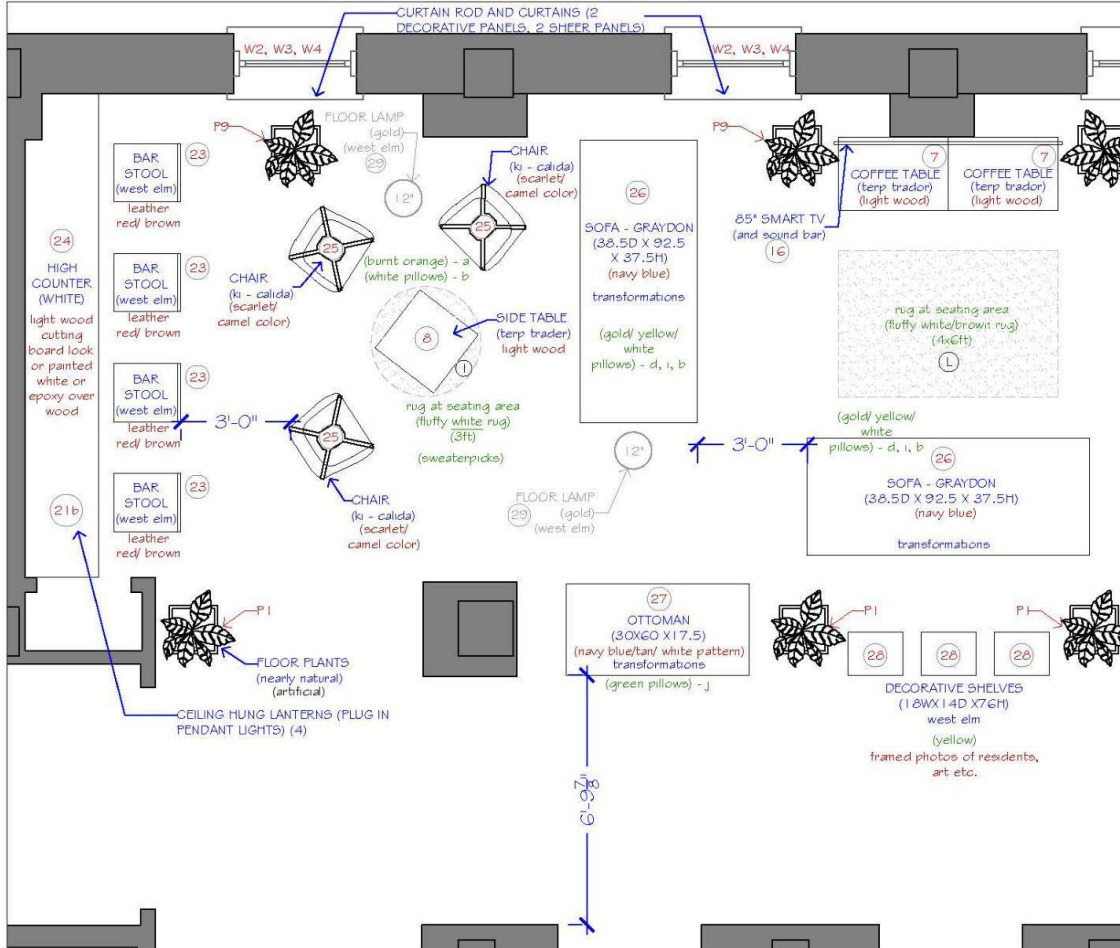
(DOUBLE QUOTATION MARK)



PRIMARY ELEMENTS OF A FURNITURE PLAN

- FURNITURE
 - BEDS, DESKS, CHAIRS, TABLES ...
- DIMENSIONS
 - BETWEEN THE FURNITURE AND FLOOR PLAN ELEMENTS (WALLS, DOORS, WALK-WAYS ...)
- DETAILS ABOUT THE FURNITURE (SPECIFICATIONS)
 - PRODUCT NAME, BRAND/ MANUFACTURER, MATERIAL, FABRIC, COLOR, SPECIAL INSTRUCTIONS, PRICE, PRODUCT DIMENSIONS ...

RESIDENTIAL FACILITIES



FURNITURE		TOTAL PRICE	PER ITEM
7	COFFEE TABLE.....2	\$40\$20
8	SIDE TABLE.....2	\$30\$15
16	85" SMART TV.....1	\$3000\$3000
23	STOOLS.....8 (BAR COUNTER)	\$3592\$449
24	COUNTERTOP.....2 (WITH BRACKETS)	\$1980\$990
25	CALIDA (WOOD LEG) LOUNGE CHAIRS.....6	\$12060\$2010
26	GRAYDON LOUNGE SOFA.....3 (STRAIGHT ARMS)	\$XXX\$XXX
27	BENCHMARK LOUNGE OTTOMAN.....2	\$XXX\$XXX
28	DECORATIVE BOOKCASE.....3 (PROFILE BOOKCASE)	\$1497\$499
LIGHTING			
21b	CEILING HUNG LANTERN.....8 LIGHTING (PLUG IN) - Retro Rattan Bamboo Pendant Lights Hand Woven Spherical Stairwell Lighting	\$1112\$139
29	LOUNGE FLOOR LAMP.....4 (SCULPTURAL FLOOR LAMP)	\$996\$249
TEXTILES (RUGS)			
1	PLUSHY FLUFFY ROUND RUG.....2 (FAUX FUR SHEEPSKIN RUG)	\$198\$99
L	PLUSH RECTANGULAR RUG.....1 (PREMIUM FAUX FUR SHEEPSKIN RUG)	\$137\$137
WINDOW TREATMENT			
W24\$XXX\$XXX
W32\$XXX\$XXX
W48\$XXX\$XXX
PLANTS/ PLANTERS			
P14\$420\$105
P94\$897\$219
ESTIMATED TOTAL:	\$XXX\$XXX



DIVISION OF STUDENT AFFAIRS

RESIDENTIAL FACILITIES

FURNITURE SCHEDULE						
ITEM/ PRODUCT NAME	MATERIAL	COLOR	DIMENSIONS	MANUFACTURER	QUANTITY (PER FLOOR)	
7	COFFEE TABLE	WOOD	LIGHT WOOD	(24" w x 36" d)	TERP TRADER	NUMBER VARIES PER FLOOR (WHERE APPLICABLE)
8	SIDE TABLE	WOOD	LIGHT WOOD	(24" w x 24" d)	TERP TRADER	NUMBER VARIES PER FLOOR (WHERE APPLICABLE)
16	85" SMART TV	SAMSUNG	BLACK	(74.5w X 12.9d X 45.1h) - WITH STAND	BESTBUY https://www.bestbuy.com/	1 TV (PER FLOOR)
23	STOOLS (BAR COUNTER)	IRON - FRAME LEATHER - SEAT	CHARCOAL - FRAME NUT SADDLE LEATHER - SEAT	19" w x 22" d x 39.8" h (30" SEAT HEIGHT)	WEST ELM https://www.westelm.com/	NUMBER VARIES PER FLOOR (WHERE APPLICABLE)

LIGHTING SCHEDULE						
ITEM/ PRODUCT NAME	MATERIAL	COLOR	DIMENSIONS	MANUFACTURER	QUANTITY (PER FLOOR)	
21b	CEILING HUNG LANTERN LIGHTING (PLUG IN) - Retro Rattan Bamboo Pendant Lights Hand Woven Spherical Starwell Lighting	NATURAL BAMBOO FIBERS	NATURAL COLOR	30 CM (3), 35CM (3), 40 CM (3), 45 CM (3), 50 CM (3), 55 CM (3) - FOURTH FLOOR. 30CM (8) - FIRST FLOOR	LIGHTING-FOREST https://www.lighting-forest.com/	NUMBER VARIES PER FLOOR (WHERE APPLICABLE)
29	LOUNGE FLOOR LAMP (SCULPTURAL FLOOR LAMP)	METAL - BODY AND BASE GLASS - SHADE	CLEAR GLASS MEDIUM SIZED GLOBE - SHADE ANTIQUÉ BRASS - FINISH	12" diameter X 58" h	WEST ELM https://www.westelm.com/	NUMBER VARIES PER FLOOR (WHERE APPLICABLE)

TEXTILES (RUG) SCHEDULE						
ITEM/ PRODUCT NAME	MATERIAL	COLOR	DIMENSIONS	MANUFACTURER	QUANTITY (PER FLOOR)	
I	FLUSHY FLUFFY ROUND RUG (FAUX FUR SHEEPSKIN RUG)	FAUX FUR SHEEPSKIN	WHITE	3 FT DIAMETER	SWEATERPICKS https://sweaterpicks.com/	NUMBER VARIES PER FLOOR (WHERE APPLICABLE)
L	FLUSH RECTANGULAR RUG (PREMIUM FAUX FUR SHEEPSKIN RUG)	PREMIUM FAUX FUR SHEEPSKIN	WHITE/BROWN	4 FT X 6 FT	SWEATERPICKS https://sweaterpicks.com/	NUMBER VARIES PER FLOOR (WHERE APPLICABLE)

TEXTILES (PILLOWS) SCHEDULE						
ITEM/ PRODUCT NAME	MATERIAL	COLOR	DIMENSIONS	MANUFACTURER	QUANTITY (PER FLOOR)	
a	BURNT ORANGE PILLOW		BURNT ORANGE			
b	WHITE PILLOW		WHITE			

PLANT/ PLANTER SCHEDULE						
ITEM/ PRODUCT NAME	MATERIAL	COLOR	DIMENSIONS	MANUFACTURER	QUANTITY (PER FLOOR)	
P1	ARTIFICIAL RIVER FERN PLANT IN METAL PLANTER STAND	FAUX PLANT METAL - PLANTER	GOLD METAL PLANTER	27" w x 34" h x 20" d - OVERALL 11" w x 27" h x 11" d - PLANTER SIZE	nearlyNATURAL https://www.nearlynatural.com/	NUMBER VARIES PER FLOOR (WHERE APPLICABLE)
P9	CORN STALK DRACAENA ARTIFICIAL PLANT IN WHITE PLANTER WITH STAND (REAL TOUCH)	FAUX PLANT SANDING PLANTER	WHITE PLANTER	12" w x 46" h x 12" d - OVERALL 11" w x 19" h x 11" d - PLANTER SIZE	nearlyNATURAL https://www.nearlynatural.com/	NUMBER VARIES PER FLOOR (WHERE APPLICABLE)



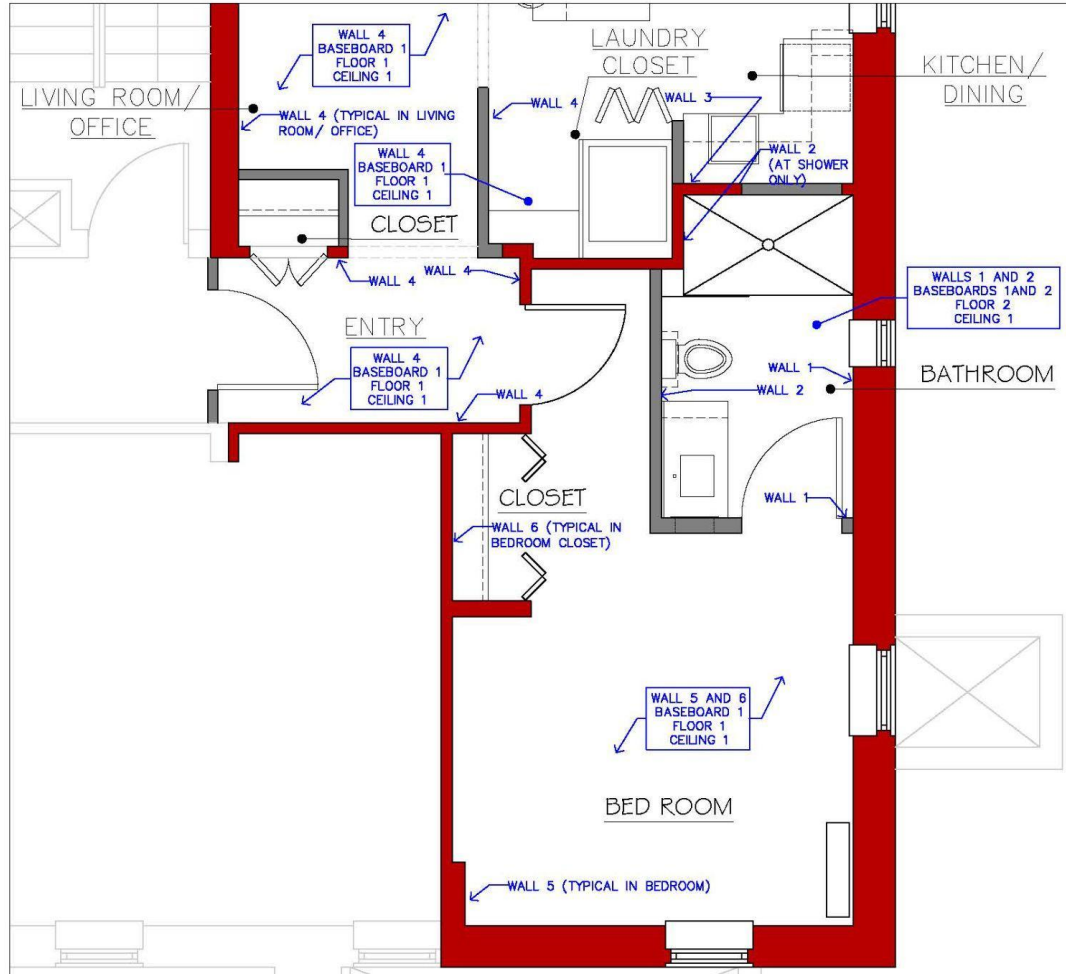
PRIMARY ELEMENTS OF A FINISH PLAN

- FLOOR SURFACE MATERIALS
 - CARPET, WOOD STONE ...
- WALL SURFACE MATERIALS
 - PAINT, WALL PAPER, BRICK, WOOD, GLASS...
- COUNTERTOP SURFACE MATERIALS
 - STONE, WOOD, PLASTIC, METAL ...
- A KEY REPRESENTING THE DIFFERENT TYPES OF SURFACE MATERIAL, AND A CHART, GIVING DETAILED INFORMATION ON EACH ITEM



DIVISION OF STUDENT AFFAIRS

RESIDENTIAL FACILITIES





DIVISION OF STUDENT AFFAIRS

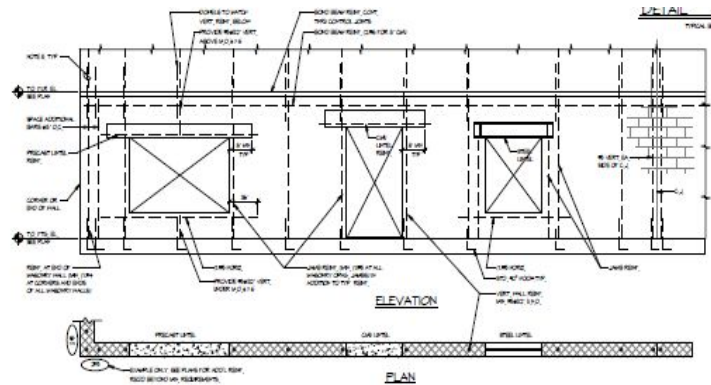
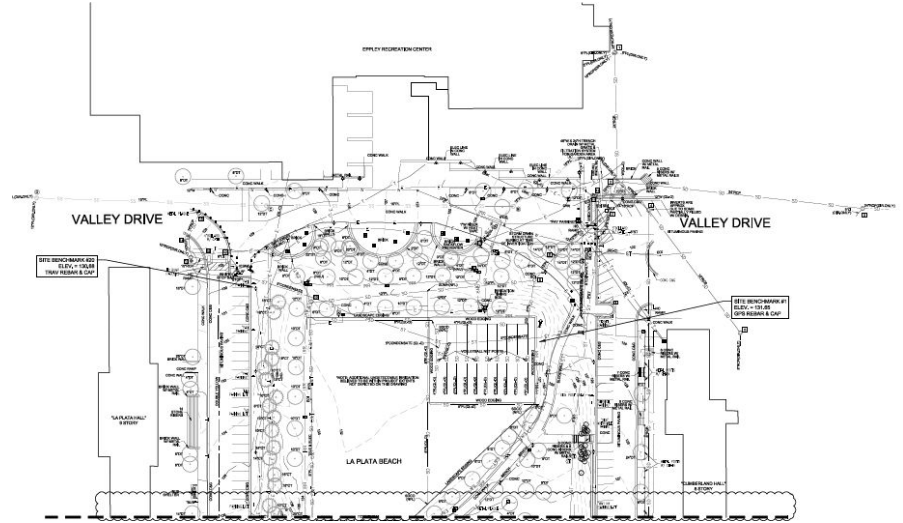
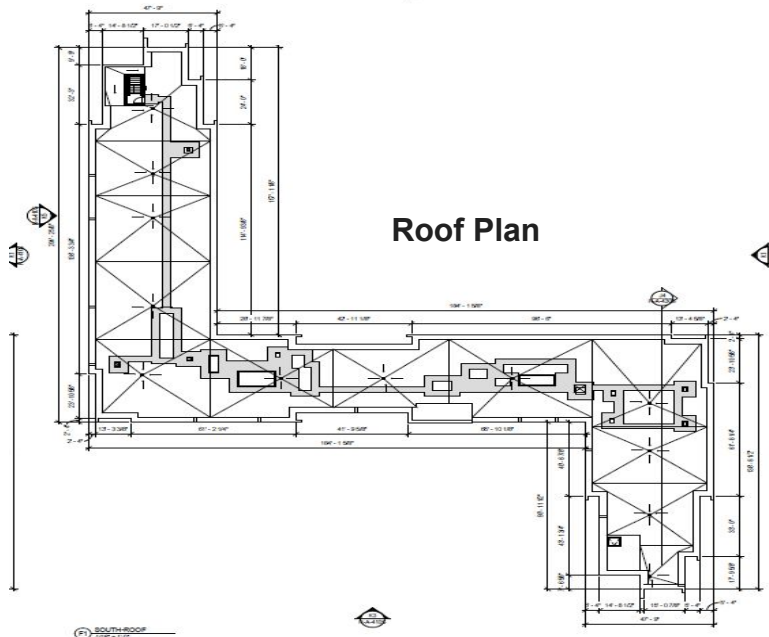
RESIDENTIAL FACILITIES

WALL FINISH SCHEDULE								
WALL TYPE	WALL MATERIAL	FINISH TYPE	COLOR	NOTES				
WALL 1	MOISTURE RESISTANT GYPSUM BOARD	PAINT (EGGSHELL SHEEN)	WHITE	PAINT OVER GYPSUM BOARD				
WALL 2	CEMENTITIOUS BOARD	CERAMIC TILE (SEMI-GLOSS SHEEN)	WHITE	CERAMIC TILE OVER CEMENTITIOUS BOARD				
WALL 3	GYPSUM BOARD	SHIP-LAP	WHITE	SHIP-LAP OVER GYPSUM BOARD				
WALL 4	GYPSUM BOARD	PAINT (EGGSHELL SHEEN)	WHITE	PAINT OVER GYPSUM BOARD				
WALL 5	GYPSUM BOARD	PAINT (EGGSHELL SHEEN)	REALIST BEIGE	PAINT OVER GYPSUM BOARD				
WALL 6	PLYWOOD SHEATHING & GYPSUM BOARD	PAINT (EGGSHELL SHEEN)	REALIST BEIGE	PAINT OVER GYPSUM BOARD, OVER PLYWOOD SHEATHING				
BASEBOARD FINISH SCHEDULE								
BASEBOARD TYPE	BASEBOARD MATERIAL AND HEIGHT	BASEBOARD MANUFACTURER	COLOR	PROFILE				
BASEBOARD 1	PAINTED MDF – 5½"	LL FLOORING – WM163	WHITE	5 ½" BASE WITH INTEGRAL OG MOULDING				
BASEBOARD 2	CERAMIC TILE – 6"	DALTILE	WHITE	BULLNOSE				
FLOOR FINISH SCHEDULE								
FLOOR TYPE	FLOOR MATERIAL	FLOOR MANUFACTURER AND MODEL	SIZE	COLOR				
FLOOR 1	LAMINATED VENEER TILE	ARMSTRONG – VIVERO GALLERY OAK	6"X48"	CORN HUSK U1030				
FLOOR 2	CERAMIC TILE	DALTILE – VINTAGE HEX VHO6	1 ½"	WISDOM WHITE				
CEILING FINISH SCHEDULE								
CEILING TYPE	CEILING MATERIAL	FINISH TYPE	COLOR	NOTES				
CEILING 1	GYPSUM BOARD	PAINT (CEILING WHITE – EGGSHELL)	WHITE	PAINT OVER GYPSUM BOARD				
DOOR SCHEDULE (SEE PLANS)								
DOOR NUMBER	DOOR TYPE, MATERIAL AND WIDTH	FINISH TYPE	WIDTH	THICKNESS	HEIGHT	COLOR	LOCKSET	NOTES
DOOR ①	ENTRY DOOR – SWING (SINGLE) – FLUSH	SOLID CORE – WOOD	SEE A-002	SEE A-002	SEE A-002	WHITE	ENTRY LOCKSET	
DOOR ②	CLOSET DOOR – BI-FOLD (2 PANELS) – FLUSH	SOLID CORE – WOOD	SEE A-002	SEE A-002	SEE A-002	WHITE	PASSAGE LOCKSET	
DOOR ③	CLOSET DOOR – BI-FOLD (4 PANELS) – FLUSH	SOLID CORE – WOOD	SEE A-002	SEE A-002	SEE A-002	WHITE	PASSAGE LOCKSET	
DOOR ④	BATHROOM DOOR – SWING (SINGLE) – FLUSH	SOLID CORE – WOOD	SEE A-002	SEE A-002	SEE A-002	WHITE	PRIVACY LOCKSET	
DOOR ⑤	SPACE DIVIDER – SLIDING (4 PANELS) – OPAQUE GLASS	SOLID CORE – WOOD	SEE A-002	SEE A-002	SEE A-002	WHITE	PRIVACY LOCKSET	



Other types of plans/ drawings:

- Site
- Roof
- Elevations
- Sections



Elevation Drawing



FLOOR PLAN TAGS AND MARKS

- **DOOR TAGS**
- **WINDOW TAGS**
- **WALL TAGS**
- **BUILDING AND DETAIL SECTION TAGS AND MARKS**
- **EXTERIOR AND INTERIOR ELEVATION TAGS**
- **ENLARGED DETAIL TAGS OR CALL-OUTS**
- **NOTE TAGS ... whew!**



DIVISION OF STUDENT AFFAIRS

RESIDENTIAL FACILITIES

LEGEND	
	EXISTING WALL OR PARTITION TO REMAIN
	NEW PARTITION - TYPE NOTED (REFER TO A5.5 FOR TYPES)
	NEW CMU
	NEW BRICK
	EXISTING WALL OR PARTITION WITH NEW FINISH
	ACCOUSTICAL INSULATION AT CEILING
	PARTITION - NEW COOLER AND FREEZER CONDENSING UNIT
	SECTION OR ELEVATION
	REFERENCE DRAWING NUMBER
	DETAIL NUMBER
	REFERENCE DRAWING PAGE NO
	DOOR TAG

Wall Tag

Note Tags

Elevation/ Section Tag/ Mark

Enlarged Detail Tag/ Callout

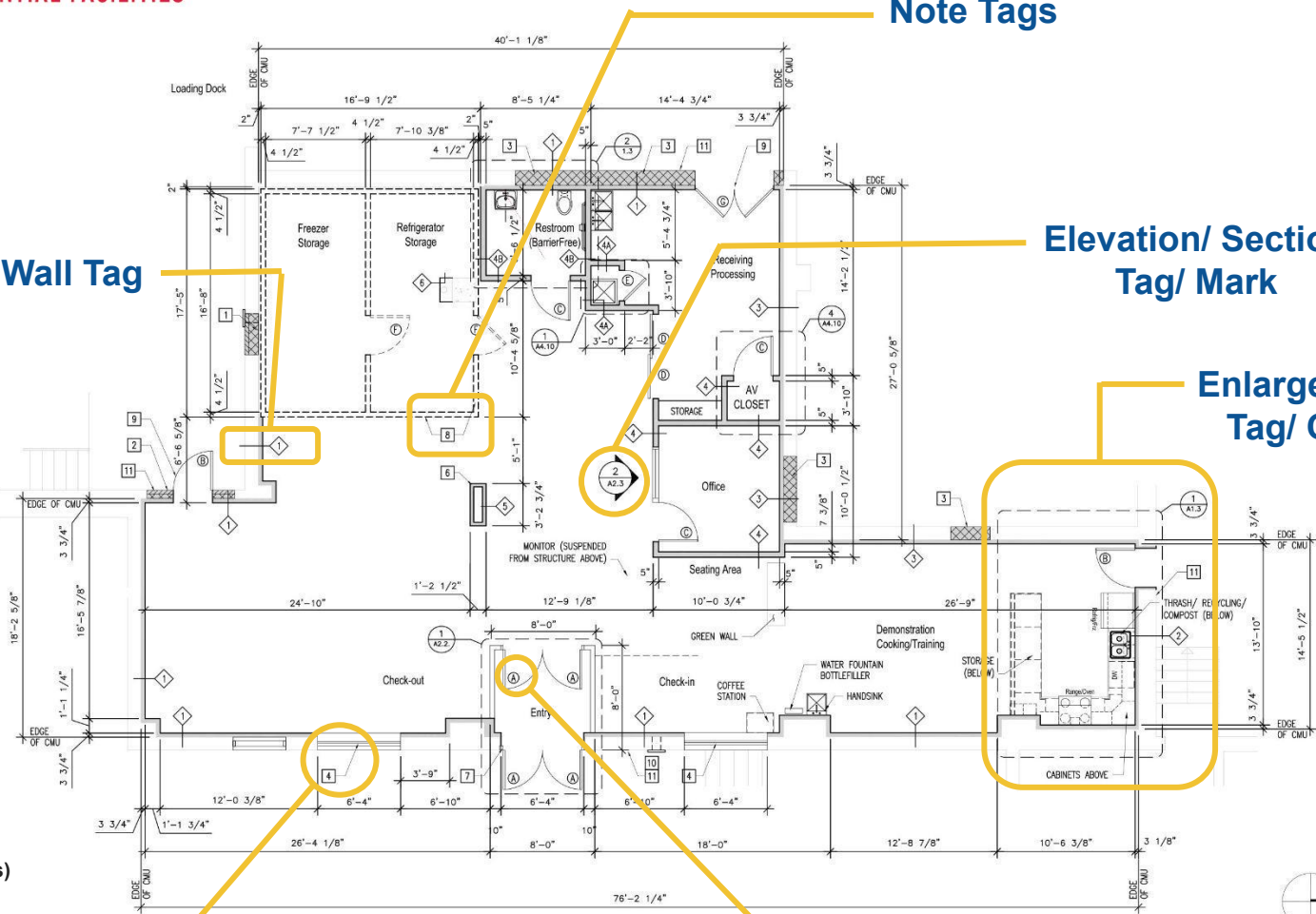
A
A-003

A = ?
(top numbers/ letters)

A-003 = ?
(bottom numbers/ letters)

Window Tag

Door Tag

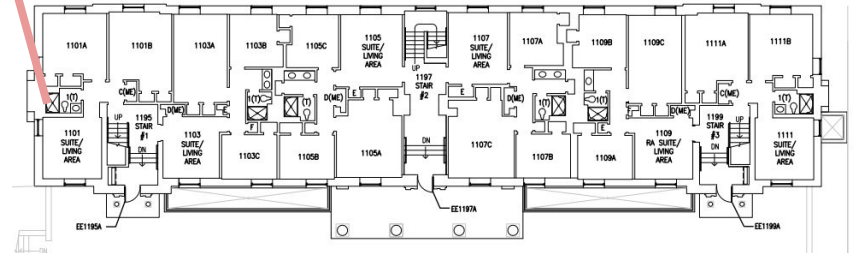
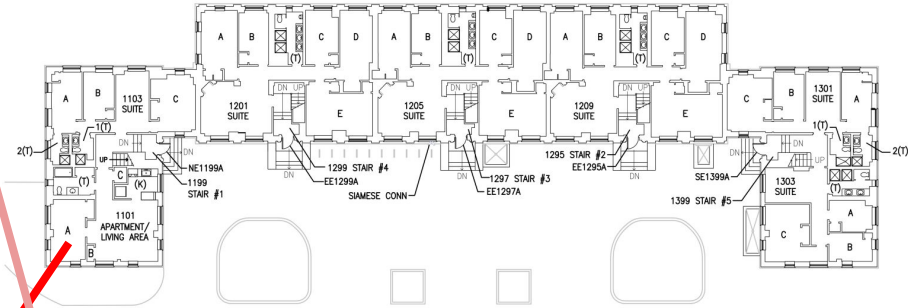
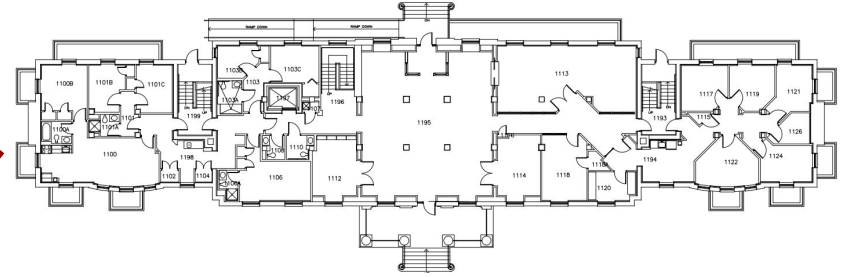


1 FLOOR PLAN: NEW WORK
SCALE: 1/4" = 1'-0"



DIVISION OF STUDENT AFFAIRS

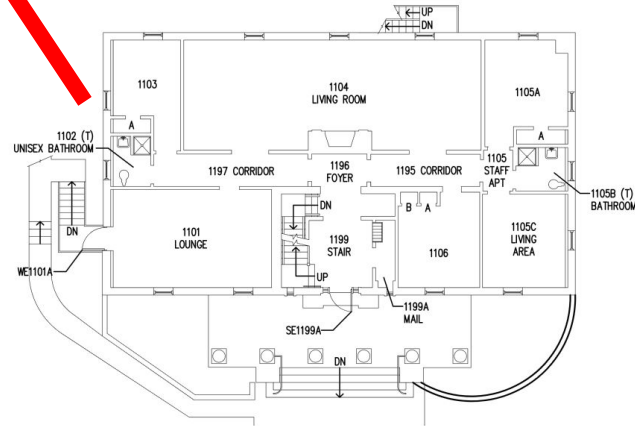
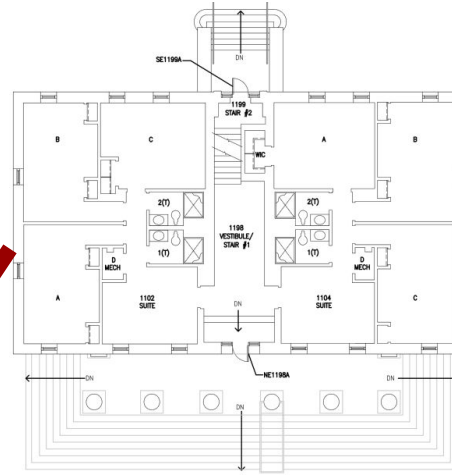
RESIDENTIAL FACILITIES





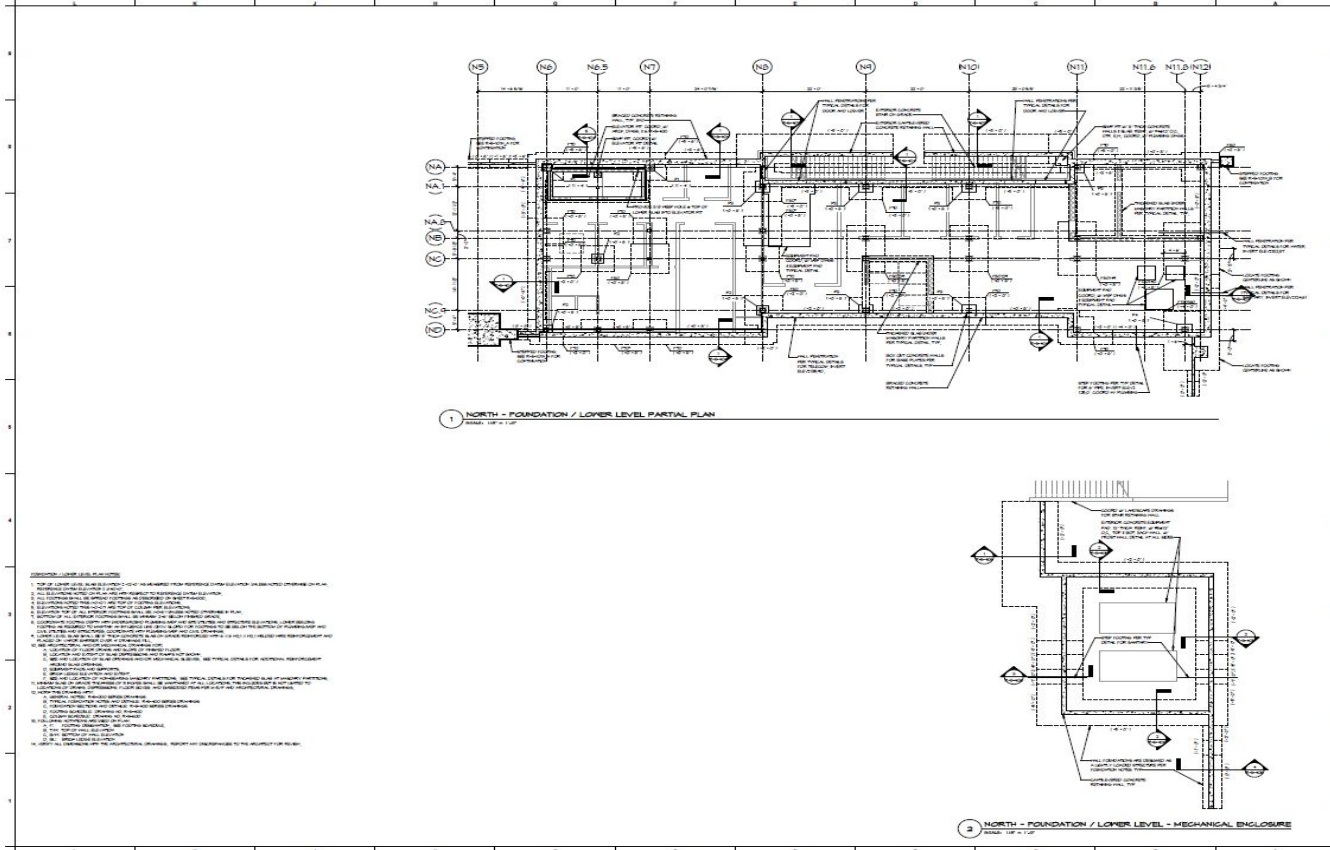
DIVISION OF STUDENT AFFAIRS

RESIDENTIAL FACILITIES





Structural Layout Drawing



UNIVERSITY OF MARYLAND

New Residence Hall & Dining Facility

University of Maryland College Park

PROJECT TEAM

ARCHITECT/LANDSCAPE CML
1000 N. GLENN DRIVE
Baltimore, MD 21202

STRUCTURAL BEST
1000 N. GLENN DRIVE
Baltimore, MD 21202

MEP BEST
1000 N. GLENN DRIVE
Baltimore, MD 21202

FOOD SERVICE DESIGN SECURITY / IT / JAY
1000 N. GLENN DRIVE
Baltimore, MD 21202

MECHANICAL SECURITY / IT / JAY
1000 N. GLENN DRIVE
Baltimore, MD 21202

ARCHITECT COMMISSIONING
1000 N. GLENN DRIVE
Baltimore, MD 21202

AYERS SAINT GROSS

SET PLAN

INDEX

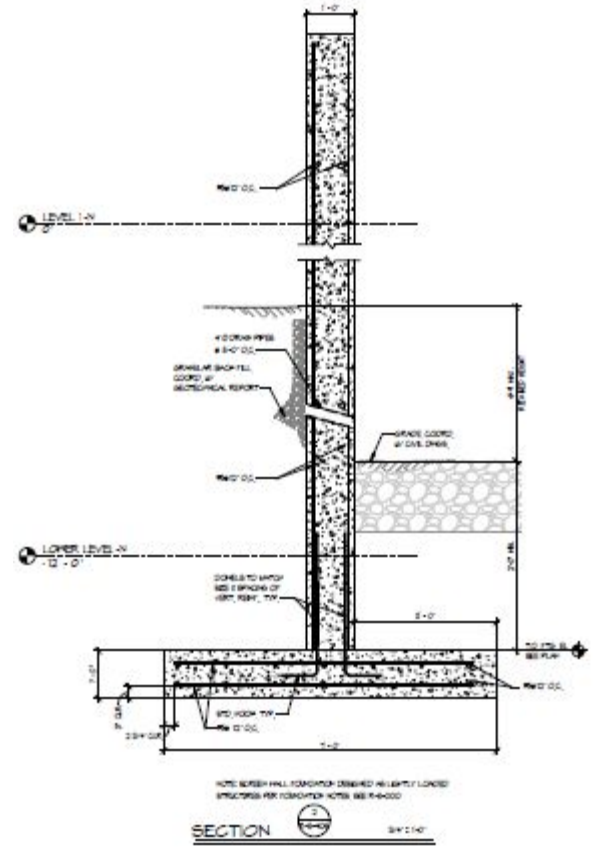
REVISIONS

DRAWING INFORMATION

PROJECT DESIGN NUMBER
CONSTRUCTION DOCUMENTS - NEW
RESIDENCE HALL

DRAWING NO.
FOUNDATION / LOWER LEVEL
PARTIAL PLAN

REVISION NUMBER
R-S-100N



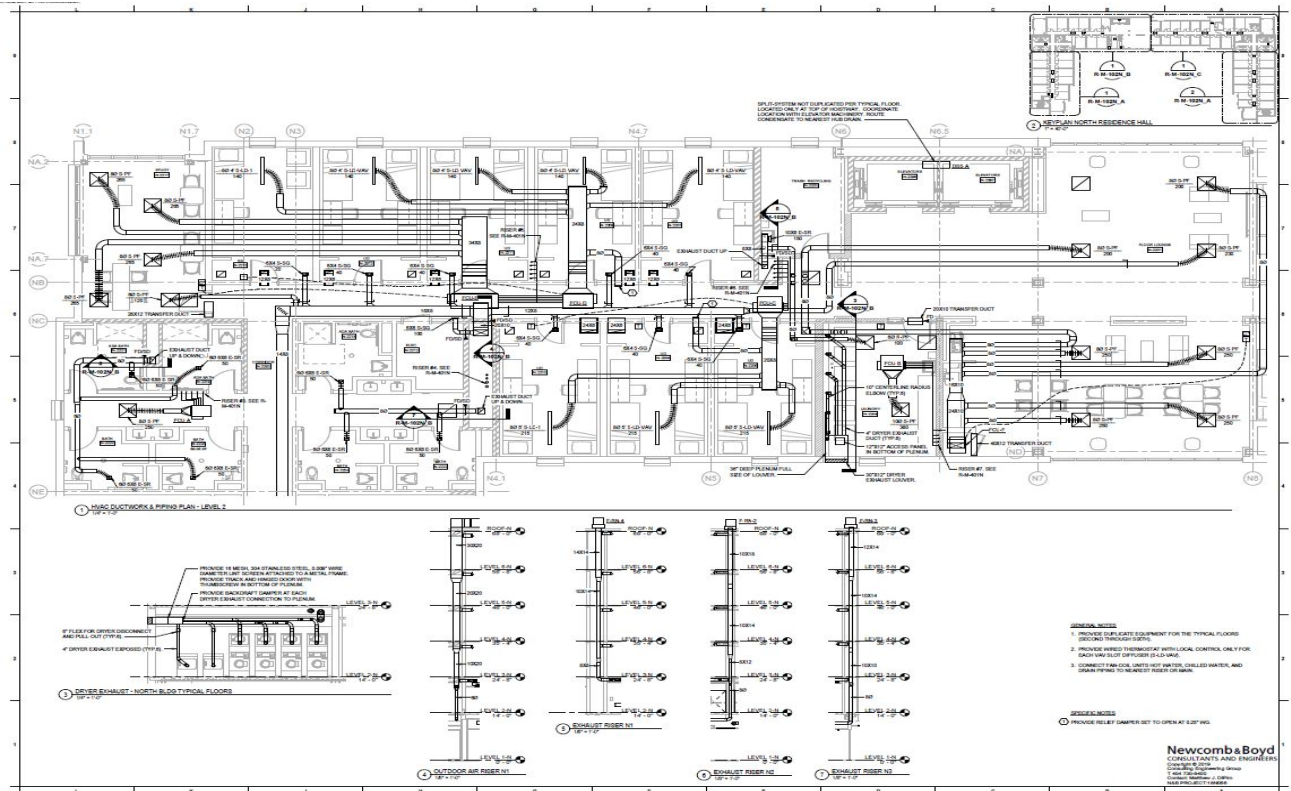
Structural Detail



DIVISION OF STUDENT AFFAIRS

RESIDENTIAL FACILITIES

Mechanical Layout - HVAC



New Residence Hall & Dining Facility

University of Maryland College Park

PROJECT TEAM

ARCHITECT/LANDSCAPE: CML, 1000 E. 7th St., Baltimore, MD 21202

STRUCTURAL: HNTB, 301 North St., Baltimore, MD 21202

ELECTRICAL: HNTB, 301 North St., Baltimore, MD 21202

MECHANICAL: HNTB, 301 North St., Baltimore, MD 21202

PLUMBING: HNTB, 301 North St., Baltimore, MD 21202

INSULATION: HNTB, 301 North St., Baltimore, MD 21202

CONSTRUCTION: HNTB, 301 North St., Baltimore, MD 21202



HVAC PLAN



NO.	REVISION	DATE



DESIGNED BY	DATE
CHECKED BY	DATE
PROJECT NO.	DATE

CONSTRUCTION DOCUMENTS - NEW RESIDENCE HALLS

PROJECT NO.	DATE

HVAC DUCTWORK & PIPING PLAN - LEVELS 2/4 (TYPICAL)

R-M-102N_B

Newcomb & Boyd
 CONSULTANTS AND ENGINEERS
 1500 South West Blvd.
 Baltimore, MD 21202
 410.528.0500
 www.newcombboyd.com



DIVISION OF STUDENT AFFAIRS

RESIDENTIAL FACILITIES

<u>PIPING VALVES AND ACCESSORIES</u>	
---	EXISTING PIPING
—PCHS—	PRIMARY CHILLED WATER SUPPLY
—PCHR—	PRIMARY CHILLED WATER RETURN
—CHS—	SECONDARY CHILLED WATER SUPPLY
—CHR—	SECONDARY CHILLED WATER RETURN
—HWS—	HOT WATER SUPPLY
—HWR—	HOT WATER RETURN
—D—	DRAIN
—HPS—	HIGH PRESSURE STEAM
—LPS—	LOW PRESSURE STEAM
—PC—	PUMPED STEAM CONDENSATE
←	DIRECTION OF FLOW
—D—	REDUCER - CONCENTRIC
—D—	REDUCER - ECCENTRIC
┌	ELBOW - 45°
└	ELBOW - 90°
—┘	ELBOW - TURNED DOWN
—┙	ELBOW - TURNED UP
—T—	TEE
—T—	TEE OUTLET DOWN
—T—	TEE OUTLET UP
—V—	ISOLATION VALVE (BALL OR BUTTERFLY VALVE)
—V—	BALL OR BUTTERFLY VALVE (SEE SPECIFICATIONS FOR USE)
—V—	2-WAY CONTROL VALVE (P - PRESSURE INDEPENDENT TYPE)
—V—	2-WAY CONTROL VALVE
—T—	CHECK VALVE
—S—	STRAINER
—U—	UNION OR FLANGE
—T—	THERMOMETER
—G—	PRESSURE GAUGE
—P—	PRESSURE / TEMPERATURE PORT
—M—	FLOW CONTROL VALVE (M-MANUAL TYPE)
—M—	AIR VENT
—A—	MANUAL TYPE
—A—	A-AUTOMATIC TYPE
—H—	HOSE END CONNECTION
—D—	FLOOR DRAIN, SEE PLUMBING DRAWINGS
—H—	STEAM GRIP ASSEMBLY
—U—	UNDERGROUND VALVE (TYPE AS SHOWN) WITH VALVE BOX
—T—	FLOW METER (A-ANNULAR TYPE; S-TURBINE TYPE; V-VENTURI TYPE)

Mechanical Symbols



DIVISION OF STUDENT AFFAIRS

RESIDENTIAL FACILITIES

Electrical Legend and Symbol Identification

ELECTRICAL EQUIPMENT	
SYMBOL	DESCRIPTION
	RECESSIBLE CONCEALED IN FLOOR OR UNDERGROUND
	RECESSIBLE CONCEALED IN CEILING, GULLY OR WALL
	RECESSIBLE TURNED ON PANEL, ONE ARROWHEAD PER CIRCUIT
	RECESSIBLE TURNED DOWN
	GROUNDING ELECTRODE
	GROUNDING ELECTRODE BONDED TO EQUIPOTENTIAL PLANE
	PANELBOARD, SURFACE MOUNTED, 208/120V
	PANELBOARD, FLUSH MOUNTED, 208/120V
	PANELBOARD, SURFACE MOUNTED, 480/277V

LUMINAIRES	
SYMBOL	DESCRIPTION
	CEILING MOUNTED 2' x 4' LUMINAIRE. LETTER INDICATES LUMINAIRE TYPE. SEE SCHEDULE.
	CEILING MOUNTED 2' x 2' LUMINAIRE. LETTER INDICATES LUMINAIRE TYPE. SEE SCHEDULE.
	CEILING MOUNTED 1' x 4' LUMINAIRE. LETTER INDICATES LUMINAIRE TYPE. SEE SCHEDULE.
	RECESSIBLE LUMINAIRE. LETTER INDICATES LUMINAIRE TYPE. SEE SCHEDULE.
	PENDANT LUMINAIRE. LETTER INDICATES LUMINAIRE TYPE. SEE SCHEDULE.
	STRIP LUMINAIRE. LENGTH TO SCALE. LETTER INDICATES LUMINAIRE TYPE. SEE SCHEDULE.
	WALL MOUNTED LUMINAIRE. LENGTH TO SCALE. LETTER INDICATES LUMINAIRE TYPE. SEE SCHEDULE.
	WALL MOUNTED LUMINAIRE. LETTER INDICATES LUMINAIRE TYPE. SEE SCHEDULE.
	EXIT LIGHT. CEILING. PENDANT MOUNTED. REFER TO ARCHITECTURAL REFLECTED CEILING PLANS FOR ARROWS AND FACE REQUIREMENTS. ELECTRICAL DRAWINGS WILL INDICATE LOCATIONS AND INDICATED CIRCuits REQUIRED CIRCUIT INFORMATION. LETTER INDICATES TYPE. SEE SCHEDULE.
	EXIT LIGHT. WALL MOUNTED. REFER TO ARCHITECTURAL REFLECTED CEILING PLANS FOR ARROWS AND FACE REQUIREMENTS. ELECTRICAL DRAWINGS WILL INDICATE LOCATIONS AND INDICATED CIRCuits REQUIRED CIRCUIT INFORMATION. LETTER INDICATES TYPE. SEE SCHEDULE.
	2' x 4' LUMINAIRE WITH PROVISIONS FOR EMERGENCY LIGHTING. LETTER INDICATES LUMINAIRE TYPE. SEE SCHEDULE.
	1' x 4' LUMINAIRE WITH PROVISIONS FOR EMERGENCY LIGHTING. LETTER INDICATES LUMINAIRE TYPE. SEE SCHEDULE.
	RECESSIBLE LUMINAIRE WITH PROVISIONS FOR EMERGENCY LIGHTING. LETTER INDICATES LUMINAIRE TYPE. SEE SCHEDULE.
	PENDANT LUMINAIRE WITH PROVISIONS FOR EMERGENCY LIGHTING. LETTER INDICATES LUMINAIRE TYPE. SEE SCHEDULE.
	WALL MOUNTED LUMINAIRE WITH PROVISIONS FOR EMERGENCY LIGHTING. LETTER INDICATES LUMINAIRE TYPE. SEE SCHEDULE.
	SITE LUMINAIRE AND POLE. LETTER INDICATES LUMINAIRE TYPE. SEE SCHEDULE.
	SPECIALTY POLE AND LUMINAIRE. LETTER INDICATES LUMINAIRE TYPE. SEE SCHEDULE.

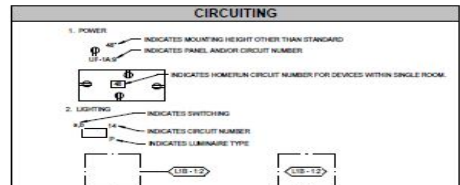
ELECTRICAL DEVICES		
SYMBOL	DESCRIPTION	MOUNTING HEIGHT, AFF. LOU.
	DUPLEX RECEPTACLE OUTLET, WALL MOUNTED	15"
	DUPLEX RECEPTACLE OUTLET, HORIZONTALLY MOUNTED, ABOVE COUNTER	15"
	SWITCHED DUPLEX RECEPTACLE OUTLET, WALL MOUNTED	
	DUPLEX RECEPTACLE OUTLET, FOR AN WORKROOM, MOUNTED WITHIN AN BACKDROP, COORDINATED MOUNTING WITH AN CONTRACTOR, UNLESS OTHERWISE NOTED.	
	GFI DUPLEX RECEPTACLE OUTLET, WALL MOUNTED	15"
	GFI DUPLEX RECEPTACLE OUTLET, WALL MOUNTED, ABOVE COUNTER	
	DUPLEX RECEPTACLE OUTLET WITH WEATHERPROOF FACEPLATE, WALL MOUNTED	
	JUNCTION BOX, WALL MOUNTED	
	JUNCTION BOX, ABOVE CEILING	
	SPECIAL RECEPTACLE TYPE A WITH NOTED SHADED REGION INDICATES PROVISION FOR OPTIONAL STANDBY POWER. SEE SCHEDULE. THIS SHEET.	
	MOTOR, NUMBER INDICATES HP	48"
	MOTOR CONTROLLER	48"
	COMBINATION MOTOR CONTROLLER/DISCONNECT	48"
	DISCONNECT SWITCH, SUBORDINATE FUSES/ENCLOSURE TYPE F OR OTHER THAN NEMA 1	48"
	INDIVIDUAL CIRCUIT BREAKER, TRIPLESS	48"

LIGHTING CONTROL DEVICES		
SYMBOL	DESCRIPTION	MOUNTING HEIGHT, AFF. LOU.
	SWITCH, WALL MOUNTED, LUMINAIRES LETTERING INDICATES CONTROLLED ZONE	48"
	BLANK - SINGLE POLE, SINGLE THROW	
	4-WAY, DOUBLE POLE, DOUBLE THROW	
	OCCUPANCY SENSOR TYPE	
	MOTION SENSOR TYPE	
	WEATHER-PROOF, SINGLE POLE, SINGLE THROW	
	DIGITAL, 1-DAY, 4-CHANNEL, PROGRAMMABLE FOR MASTER CONTROL OF LUMINAIRES IN DORMITORY CORRIDORS	48"
	WALL SIZE DIMMER, 800 W, PRECISE EXACT TYPE TO MATCH CONTROLLED LUMINAIRES, MOUNT 48" AFF. LOU.	48"
	EMERGENCY LIGHTING CONTROL, RELAY	
	TIME SWITCH	
	PHOTOCELL	
	CONTACTS, NORMALLY OPEN	
	CONTACTS, NORMALLY CLOSED	
	COIL - LIGHTING CONTACTOR, R-RELAY CONTROL, 4-WAY MOTOR CONTACTOR	
	LIGHTING CONTROL SENSOR DEVICE, OCCUPANCY SENSOR, PHOTO SENSOR, OR SECURITY SENSOR. WHERE NO LETTER IS SHOWN, SENSORS SHALL CONTROL ALL LUMINAIRES IN CORRESPONDING ROOM. IF LAMP RESISTANT, IF A PENDANT MOUNT PER MANUFACTURER'S RECOMMENDATION	
	WALL-MOUNTED DUAL-TECH, TECHNOLOGY OCCUPANCY SENSOR, 3000 SQUARE FEET OF COVERAGE AND 180 DEGREES OF SENSING, 4M AS REQUIRED PER INDIVIDUAL ROOM REQUIREMENTS, MULTIPLE SENSORS IN A SINGLE AREA SHALL PROVIDE PARALLEL CONTROL.	96"
	UEGM EMERGENCY LIGHTING CONTROL EQUIPMENT LOCATED ABOVE ACCESSIBLE CEILING. SEE DETAIL #1 ON SHEET R-4-112 FOR TYPICAL WIRING DIAGRAM.	

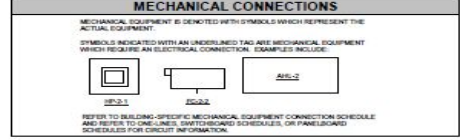
PROJECT GENERAL NOTES	
1. PROVIDE AND LABEL ALL CIRCUIT IDENTIFIERS PER THE FOLLOWING FOR CIRCUITS SERVING DORMITORY UNITS, LOUNGES, AND HALLWAYS: PROVIDE ACCESSIBLE LABELS FOR LISTED SYMBOLS AND MOUNTING HEIGHTS.	
2. THESE DRAWINGS INDICATE THE ELECTRICAL REQUIREMENTS OF OTHER DEVICES FOR EXACT LOCATIONS AND MOUNTING HEIGHTS. ELECTRICAL LUMINAIRES (NOT SHOWN ON THE ELECTRICAL DRAWINGS) ON OTHER TRADES' DRAWINGS.	
3. THE LOCATIONS AND QUANTITIES OF OCCUPANCY SENSORS INDICATED ON THE DRAWINGS AND DIAGRAMS AND INDICATE ONLY THAT THE ROOMS ARE TO BE PROVIDED WITH OCCUPANCY SENSORS. THE EXACT LOCATIONS AND QUANTITIES SHALL BE DETERMINED AT ACCOMMODATE OCCUPANCY HABITS OF SINGLE OR MULTIPLE OCCUPANTS AT ANY LOCATION WITH THE ROOMS. PROVIDE ADDITIONAL OCCUPANCY SENSORS IF REQUIRED TO PREVENT AND COMPLETELY COVER THE RESPECTIVE ROOM AT NO ADDITIONAL COST TO THE OWNER.	
4. EMERGENCY LUMINAIRES SHALL NOT BE SWITCHED, UNLESS OTHERWISE NOTED IN SPECIFIC REVISIONS. SEE FLOOR PLANS.	
5. CONDUITS IN UNFINISHED ELECTRICAL AND MECHANICAL SPACES SHALL BE INSTALLED EXPOSED TO VIEW.	
6. CEILING-MOUNTED ELECTRICAL DEVICES (OCCUPANCY SENSORS, PHOTOCELLS, ETC.) SHALL BE CENTERED IN ASSOCIATED CEILING TILE.	
7. PROVIDE CIRCUIT DIRECTORIES FOR PANELBOARDS. SPARE CIRCUITS SHALL BE LABELED IN TRINCS.	
8. PROVIDE NEW NAMEPLATES FOR ELECTRICAL DETAILS AND SPECIFICATION SECTION 2806. EQUIPMENT DESIGNATIONS SHALL BE PER ONE-LINE DIAGRAM AND NEW WORK PLANS.	
9. IN ADDITION TO CONDUCTORS REQUIRED FOR NORMAL POWER CONNECTIONS TO EMERGENCY LUMINAIRES, PROVIDE AN UNBROKEN PIGTAIL CONNECTION TO A REMOTE LIGHT EMERGENCY SYSTEM RELAY CONNECTING TO EMERGENCY LUMINAIRES. SHALL BE MADE WITH CONDUIT DEDICATED TO THE EMERGENCY SYSTEM AND SHALL BE SHARED WITH NEAREST EXISTING CONDUIT. EMERGENCY LUMINAIRE OPERATION SHALL BE CONSISTENT WITH OTHER ASSOCIATED LIGHTING, AND SHALL BE POWERED BY THE GENERATOR DURING LOSS OF NORMAL POWER. NON-SWITCHED CONDUCTORS SHALL ORIGINATE FROM THE SAME BRANCH CIRCUIT WHICH SERVES ASSOCIATED LIGHTING. FOR PIGTAIL SPACES WITH CEILING DEVICES TO BE SHARED, LOCATE RELAY ABOVE EXISTING CONDUIT AND INSURE THAT ALL RELAY CONNECTIONS ARE MADE IN SHARED EXISTING CONDUIT. EXISTING CONDUIT SHALL NOT BE SWITCHED, BUT SHALL SHARED CIRCUITS WITH SWITCHED EXISTING CONDUIT AS REQUIRED ON FLOOR PLANS.	
10. PROVIDE 2ND AND #12 IN 1/2" RIGID FOR 30A 1-POLE CIRCUIT BREAKERS INDICATED ON PANELBOARD SCHEDULES, UNLESS OTHERWISE NOTED ON FLOOR PLANS. REFER INFORMATION FOR CIRCUIT BREAKERS 2-POLE OR 3-POLE OR 4-POLE HIGHER THAN 30A ARE INDICATED BY SCHEDULES OR ON FLOOR PLANS.	

SPECIAL CONNECTION SCHEDULE	
MARK	DESCRIPTION
D1	(120V/1PH) - 4.8 KW APARTMENT DWELLING UNIT DRYER. PROVIDE WITH 2ND AND #12 IN 1/2" RIGID.
D2	(120V/1PH) - 8 KW COMMERCIAL STACKED WASHER / DRYER. PROVIDE WITH 2ND AND #12 IN 1/2" RIGID.
D3	(120V/1PH) - 30 KW COMMERCIAL STACKED WASHER. PROVIDE WITH 3RD AND #12 IN 1/2" RIGID.
D4	(120V/1PH) - 3 KW COMMERCIAL GRADE WASHER. PROVIDE WITH 3RD AND #12 AND #12 IN 1/2" RIGID.
D5	(120V/1PH) - 4.75 KW COMMERCIAL DRYER. PROVIDE WITH 3RD AND #12 IN 1/2" RIGID.
H	(120V/1PH) ELECTRIC HAND DRYER. PROVIDE WITH 3RD AND #12 IN 1/2" RIGID.
R	(120V/1PH) - 7.9 KW ELECTRIC OVEN RANGE. PROVIDE WITH 3RD AND #12 IN 1/2" RIGID.
T1	1/2" RIGID TWIST LOCK RECEPTACLE. PROVIDE WITH 3RD AND #12 IN 1/2" RIGID.

ABBREVIATIONS			
AWY	ABOVE	THOUSAND CIRCULAR MILLS	
AWY	ABOVE FINISHED FLOOR GRADE/BASE FLOOR	LUMR	LUMINAIRE
AWY	ABOVE FINISHED ARCHITECTURAL	LUMR	LUMINAIRE
AWY	ADJACENT	MCC	MOTOR CONTROL CENTER
BEH	BELOW	MCCB	MASK CROCKET BREAKER
BEH	BELOW FLOOR	MCCM	MECHANICAL
BEH	BELOW GRADE	MCL	MISCELLANEOUS
BEH	BELOW	MFR	MANUFACTURER
CE	CIRCUIT BREAKER	MFR	MANUFACTURER
CE	CIRCUIT	NED	NATIONAL ELECTRIC CODE
CEL	CEILING	NOC	NORMALLY CLOSED
CEL	COLUMN	NOE	NORMALLY OPEN
CON	CONNECTION	OC	OVERCURRENT PROTECTION
CON	CONDUIT TO NONFINISHED	OC	OVERCURRENT
CON	CONDUIT TO FINISHED	OC	OVERCURRENT PROTECTION DEVICE
DAU	DIGITAL ADDRESSABLE LIGHTING INTERFACE	OC	OVERCURRENT
DC	EMPTY CIRCUIT	PC	PHOTOCELL
DE	DELETION	PF	POWER FACTOR
EMT	ELECTRICAL METALLIC TUBING	PML	PANEL
ENT	ELECTRICAL NONMETALLIC TUBING	PC	POLYESTER CHLORIDE CONDUIT
EPL	ESSETING TO RIGID	PF	POWER FACTOR
ES	ESSETING	PC	REMOTE CONTROL
F	FUSED	PC	RECEPTACLE
FA	FIRE ALARM	REC	RELOCATE
FB	FLOOR BOX	REQ	REQUIREMENTS
FL	FLOOR	R	RANGE
FL	FLOOR FAULT CIRCUIT INTERRUPTER	SC	SHORT CIRCUIT CURRENT RATING
G	GROUND	SC	SPECIFICATION
GFI	GROUND FAULT PROTECTION SYSTEM	SPD	SURGE PROTECTIVE DEVICE
GF3	GROUND FAULT CIRCUIT INTERRUPTER FOR EQUIPMENT PROTECTION	SQD	SINGLE POLE DOUBLE THROW
GR	GROUND OFF AUTOMATIC	ST	STEEL TRIP
HCA	HIGH CURRENT SMOOR	SW	SWITCH
HPS	HIGH PRESSURE SMOOR	SWD	SWITCHBOARD
HP	HOT POWER	TYP	TYPICAL
INT	INTERMEDIATE	UN	UNFINISHED
IS	INSULATED GROUND INTERMEDIATE METAL CONDUIT	UN	UNFINISHED
J	JUNCTION BOX	UP	UPPER PRESIDENTY DRIVE
JC	JUNCTION BOX	WP	WEATHERPROOF
KA	KILOWATT	WTM	TRANSFORMER

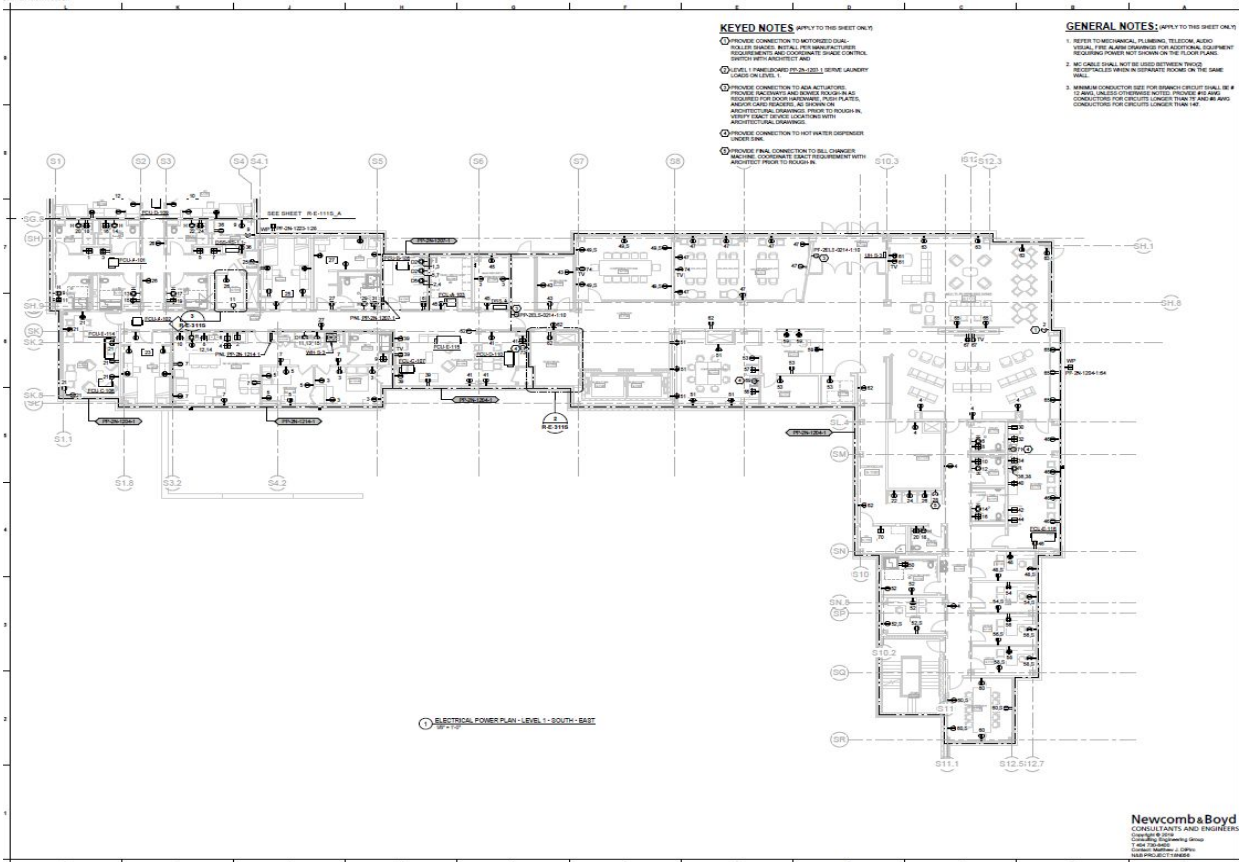


DEVICED PANELS FROM WHICH ALL CIRCUITS WITHIN DESIGNATED AREA SHALL BE SERVED, OR DEVICED SPECIFIC CIRCUIT FROM WHICH ALL CONNECTING SHALL BE MADE. (SEE PANELBOARD SCHEDULES FOR CIRCUITING REQUIREMENTS. THE MAXIMUM NUMBER OF BRANCH CIRCUIT PHASE CONDUCTORS INSTALLED IN SINGLE CONDUIT SHALL NOT EXCEED THREE (3) JOINS.





Electrical Layout Plan



KEYED NOTES: APPLY TO THIS SHEET ONLY

- 1 PROVIDE CONNECTION TO NOTIFIED QUALIFIED ELECTRICIAN. INSTALL PER MANUFACTURER'S REQUIREMENTS AND COORDINATE SHIELD CONTROL SWITCH WITH ARCHITECT AND
- 2 LEVEL 1 FRESH AIR INTAKE (L1) SERVICE LAUNDRY CAGES ON LEVEL 1
- 3 PROVIDE CONNECTION TO AIR ACTUATOR. PROVIDE ELECTRICAL AND WIRING AS SHOWN AS REQUIRED FOR EACH AIRWAY. PROVIDE PLATES AND/OR CARD READERS. ALL BREAKERS ARCHITECTURAL DRAWINGS. PROVIDE TO ROOMS IN ARCHITECTURAL DRAWINGS.
- 4 PROVIDE CONNECTION TO HOT WATER SUPPLIER SHEET 046
- 5 PROVIDE FINAL CONNECTION TO BELL CONDUIT. INCLUDE CONDUIT IN GUEST ROOMS WITH ARCHITECT PRIOR TO ROOM IN.

GENERAL NOTES: APPLY TO THIS SHEET ONLY

- 1 REFER TO MECHANICAL, PLUMBING, TELEPHONE, AUDIO VISUAL, FIRE ALARM EQUIPMENT FOR ADDITIONAL EQUIPMENT REQUIREMENTS. THESE NOT LOCATED ON THE FLOOR PLANS.
- 2 80 CABLE SHALL NOT BE USED BETWEEN TRAYS. RECEPTACLES WIRING IN SEPARATE ROOMS ON THE SAME FLOOR.
- 3 MINIMAL CONDUCTOR SIZE FOR BRANCH CIRCUIT SHALL BE # 12 AWG. UNLESS OTHERWISE NOTED. PROVIDE #12 AWG CONDUCTORS FOR CIRCUITS LONGER THAN 147'

1 ELECTRICAL POWER PLAN - LEVEL 1 - SOUTH - EAST

Newcomb&Boyd
 CONSULTANTS AND ENGINEERS
 7000 Parkway
 Baltimore, MD 21206
 Tel: 410.528.1000
 Fax: 410.528.1001
 www.newcombboyd.com

UNIVERSITY OF MARYLAND

18 56

New Residence Hall & Dining Facility

University of Maryland College Park

PROJECT TEAM

ARCHITECT/LANDSCAPE: CML
 4000 Green Spring Lane, Columbia, MD 21046
 1000 North Ave, Suite 200, Baltimore, MD 21201
 Phone: 410.371.0101

MEP: Heston & Heston
 1000 North Ave, Suite 200, Baltimore, MD 21201
 Phone: 410.371.0101

FOOD SERVICE DESIGN: SECURITY 1/11 AV
 1000 North Ave, Suite 200, Baltimore, MD 21201
 Phone: 410.371.0101

GENERAL CONTRACTOR: CML
 4000 Green Spring Lane, Columbia, MD 21046
 1000 North Ave, Suite 200, Baltimore, MD 21201
 Phone: 410.371.0101

AYERS SAINT GROSS

KEY PLAN

REVISIONS

NO.	DESCRIPTION	DATE

CONSTRUCTION DOCUMENTS - NEW RESIDENCE HALLS

PROJECT SHEET

ELECTRICAL POWER PLAN - LEVEL 1 - PART B

DRAWING NUMBER

R-E-111S_B

BULKHEAD ASSIGNMENT SHEET



**DIVISION OF
STUDENT AFFAIRS**

RESIDENTIAL FACILITIES

DISTRIBUTION PANELBOARD "DP-2N-1219-1" SCHEDULE						
VOLTS: 120/208 Wye		BUS: 1000 A		MOUNTING: SURFACE		
PHASES: 3		MAIN: MCB		LOCATION: ELEC N-1219		
WIRE: 4		SCCR: 22,000				
NOTES:						
CKT	CIRCUIT DESCRIPTION	POLES	FRAME	TRIP	LOAD (KVA)	REMARKS
1	PP-2N-1219-1	3	225 A	225 A	56.5 KVA	
2	PP-2N-2212-1	3	225 A	225 A	44.9 KVA	
3	PP-2N-3212-1	3	225 A	225 A	35.0 KVA	
4	PP-2N-4212-1	3	225 A	225 A	39.0 KVA	
5	PP-2N-5212-1	3	225 A	225 A	52.6 KVA	
6	PP-2N-6212-1	3	225 A	225 A	40.5 KVA	
7						
8						
9						
10						
11						
12						
LOAD CLASSIFICATION	CONNECTED LOAD	DEMAND FACTOR	ESTIMATED LOAD	CONNECTED LOAD: 268598 VA CALCULATED LOAD: 146378 VA CONNECTED AMPERES: 746 A CALCULATED AMPERES: 406 A		
Lighting	502 VA	100.00%	502 VA			
Lighting - Dwelling Unit	2956 VA	100.00%	2956 VA			
Motor	5900 VA	100.00%	5900 VA			
Power	4800 VA	100.00%	4800 VA			
Receptacle	254440 VA	51.97%	132220 VA			

Electrical Panel Schedule



DIVISION OF STUDENT AFFAIRS

RESIDENTIAL FACILITIES

Plumbing Legend

PLUMBING LEGEND		ABBREVIATIONS	
	600 (S) OR WASTE (S) ABOVE FLOOR OR GRADE	ABV	ABOVE
	600 (S) OR WASTE (S) BELOW FLOOR OR GRADE	AFR/AFBF	ABOVE FINISHED FLOOR/ABOVE BASED FLOOR
	VENT (S)	AP	ACCESS PANEL
	RAINWATER (RW) ABOVE FLOOR OR GRADE	ARCH	ARCHITECT/ARCHITECTURAL
	RAINWATER (RW) BELOW FLOOR OR GRADE	AS	ALLOY STEEL
	CUTTER/LYER WARMWATER (CW) ABOVE FLOOR OR GRADE	AWTP	AUTOMATIC WMR TRAP PRIMER
	CUTTER/LYER WARMWATER (CW) BELOW FLOOR OR GRADE	BL	BELLEVUE
	COLD WATER (CW)	BF	BELDEN FLOOR
	HOT WATER (HW)	CLS	CEILING
	HOT WATER (HW) (S) (S) (S) (S) (S)	COL	COLUMN
	NON-PORTABLE WATER (NPT)	CONC	CONCRETE
	TRAP PRIMER (TP)	CON	CONDUIT
	NATURAL GAS (NG)	CONC	CONNECTION/CONNECTIONS
	GREASE WASTE (GW) ABOVE FLOOR OR GRADE	DN	DOWN
	GREASE WASTE (GW) BELOW FLOOR OR GRADE	DIS	DISCONNECT
	GREASE WASTE (GW) VENT (GV)	DSB	DRAWING
	PLUMBING DISCONNECT (PD)	ELS	ELECTRICAL/ELECTRIC
	HARDWARE (HW)	EW	ELECTRIC WATER COOLER
	DRAIN	EP	EXPOSED
	ROOF DRAIN (RD)	FD	FLOOR DRAIN
	FLOOR CLEANOUT (FO)	FM	FOUNDATION
	CORNER CLEANOUT (COC)	FS	FLOOR SLAB
	CLEANOUT (CO)	FT	FOOTING
	STRAINER	GR	GRADE
	WASH OR FLANGE	HC	HANDICAPPED
	HOSE (HS)	HD	HUB DRAIN
	WALL HYDRANT	H	HARDY PLUMBING
	PRESSURE REGULATING VALVE	M	ICE MACHINES/ICE MAKER
	CHECK VALVE	LAV	LAVATORY
	GLIDE VALVE	MCH	METCHANICAL
	ALTERNATE OR MANUAL FLOW CONTROL FITTING	MN	MANHOLE
	BALENCING VALVE	NFW	NON-FREZE WALL FITTING
	GRATE PRESSURE REGULATOR	PD	PLUMBING AND DRAINAGE INSTITUTE
	GAZ VALVE	RD	ROOF DRAIN
	GATE VALVE (G) BUTTERFLY VALVE		
	GATE VALVE (G) IN VERTICAL PIPE		
	BALL VALVE		
	BALL VALVE IN VERTICAL PIPE		
	WEIRING VALVE		
	TEMPERATURE AND PRESSURE RELIEF VALVE		
	PRESSURE RELIEF VALVE		
	VACUUM BREAKER		
	VACUUM RELIEF VALVE		
	TEMPERATURE TEST		
	PRESSURE GAUGE		
	WATER HAMMER ARRESTER		
	TRAP PRIMER		
	TRAP PRIMER WITH DISTRIBUTION UNIT		
	FLOW BALANCING ASSEMBLY		
	BACKFLOW PREVENTER		
	WATER METER		
	BACKFLOW PREVENTER		
	PISTON		



New Residence Hall & Dining Facility

University of Maryland College Park

PROJECT TEAM

ARCHITECT/LANDSCAPE DBL
 1000 UNIVERSITY DRIVE
 ANNAPOLIS, MD 21401
 410-326-5121 FAX 410-326-5100
 1010 UNIVERSITY PL
 BALTIMORE, MD 21201
 410-326-7121 FAX 410-326-7120

STRUCTURAL MSP
 1501 S. HANOVER ROAD
 ANNAPOLIS, MD 21403
 410-291-0500 FAX 410-291-0500

MECHANICAL SECURETY OF IAC
 1429 S. HANOVER ROAD
 ANNAPOLIS, MD 21403
 410-291-0500 FAX 410-291-0500

ELECTRICAL SECURETY OF IAC
 1429 S. HANOVER ROAD
 ANNAPOLIS, MD 21403
 410-291-0500 FAX 410-291-0500

ENGINEERS COMMERCE
 1000 UNIVERSITY DRIVE
 ANNAPOLIS, MD 21401
 410-326-5121 FAX 410-326-5100



NO.	DESCRIPTION	DATE



ISSUING INFORMATION

DESIGN DATE	07/02/2010
SCALE	AS SHOWN
DATE	07/02/2010
LOCATION	ANNAPOLIS, MARYLAND

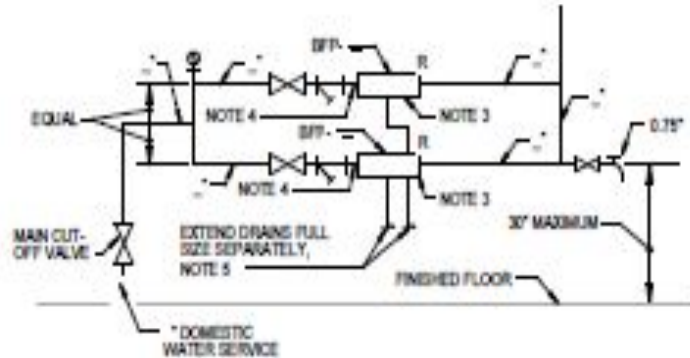
PROJECT OWNER/ISSUER
CONSTRUCTION DOCUMENTS - NEW RESIDENCE HALLS

ISSUED FOR
PLUMBING LEGEND
R-P-000
 © COPYRIGHT ASSOCIATION OF PROFESSIONAL ENGINEERS 2009

Newcomb+Boyd
 CONSTRUCTION DOCUMENTS
 1000 UNIVERSITY DRIVE
 ANNAPOLIS, MD 21401
 410-326-5121 FAX 410-326-5100



Plumbing Layout



NOTES:

1. SEE SCHEDULES FOR PRV-1 ASSEMBLY, AND BACKFLOW PREVENTERS.
2. PROVIDE BLOWDOWN BALL VALVE AND CAP ON EACH STRAINER.
3. BFP ASSEMBLY INCLUDES INLET AND OUTLET ISOLATION VALVES. PROVIDE INTEGRAL BODY UNIONS OR FLANGED END ADAPTERS.
4. PROVIDE ALGEBRARY CHECK VALVE WITH RESILIENT SEAT ON INLET TO RP TYPE BACKFLOW PREVENTERS.
5. EXTEND RELIEF VALVE DRAINS FULL SIZE THRU EXTERIOR WALL AND TERMINATE WITH DOWN-TURNED ELBOW. SEAL WALL PENETRATION WATER TIGHT.

3 BACKFLOW PREVENTER AND PRESSURE REDUCING VALVE ASSEMBLY
NO SCALE



Assignment #1: Reading Furniture Plans



SECOND FLOOR (CENTER WING)

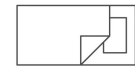
Determine
Quantities of:

- Love Seats



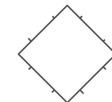
5

- Beds



21

- Study
Tables



2



FURNITURE CONCEPTS

DATE: 04 MAY 2018 DRAWING_SCALE: ---
DRAWN_BY: --- CHECKED_BY: ---

DORCHESTER HALL
Bldg # 064

DEPARTMENT OF RESIDENTIAL FACILITIES
UNIVERSITY OF MARYLAND, COLLEGE PARK



Assignment #2: Finish Take-Off

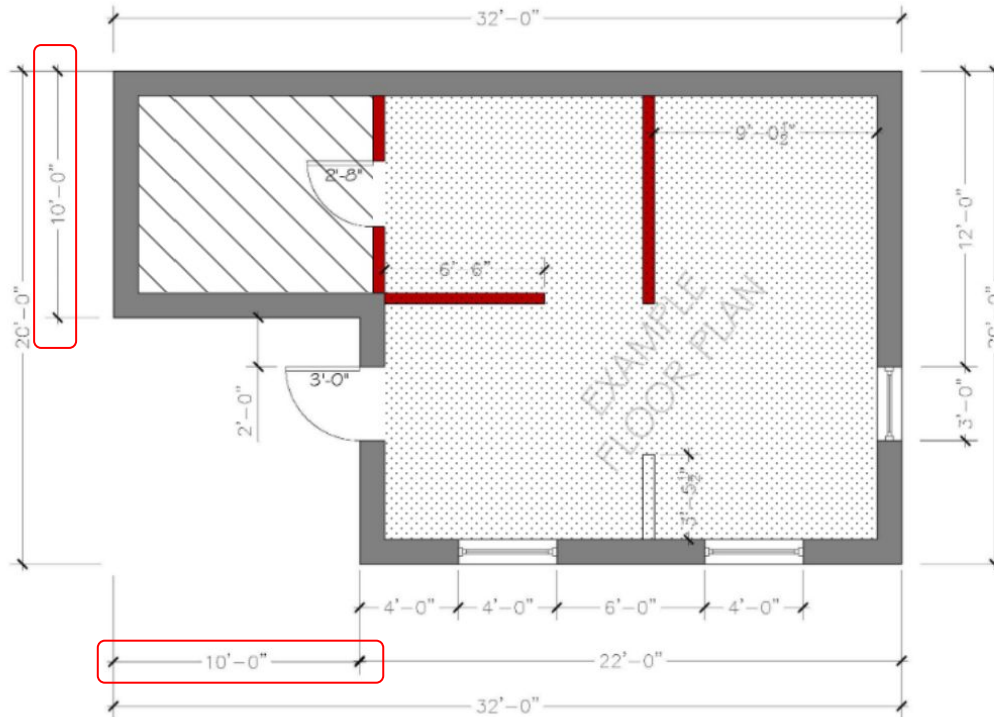
FINISH LEGEND



LVT



Carpet

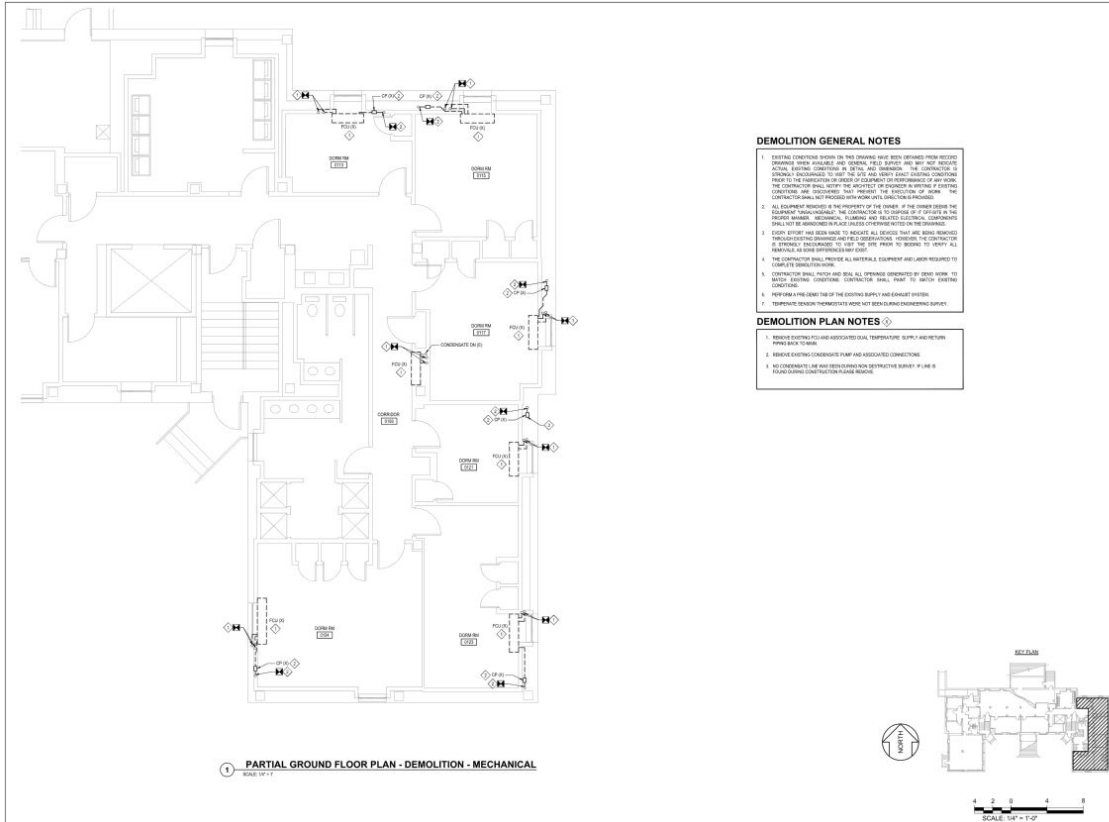


Determine
Square Footage
Needed of LVT
(Luxury Vinyl
Tile)

$$10'-0'' \times 10'-0'' \\ = 100'-0'' \text{ SF}$$



Assignment #3: Assessing number of FCUs to be demoed



DEMOLITION GENERAL NOTES

1. EXISTING CONDITIONS SHOWN ON THIS DRAWING ARE NOT GUARANTEED TO BE ACCURATE. CONTRACTOR SHALL VERIFY ALL CONDITIONS IN THE FIELD PRIOR TO THE START OF WORK. THE CONTRACTOR SHALL BE RESPONSIBLE FOR VERIFYING ALL CONDITIONS IN THE FIELD PRIOR TO THE START OF WORK. THE CONTRACTOR SHALL BE RESPONSIBLE FOR VERIFYING ALL CONDITIONS IN THE FIELD PRIOR TO THE START OF WORK.
2. ALL DEMOLITION WORK SHALL BE THE RESPONSIBILITY OF THE CONTRACTOR. THE CONTRACTOR SHALL BE RESPONSIBLE FOR OBTAINING ALL NECESSARY PERMITS AND APPROVALS FROM THE APPROPRIATE AGENCIES. THE CONTRACTOR SHALL BE RESPONSIBLE FOR OBTAINING ALL NECESSARY PERMITS AND APPROVALS FROM THE APPROPRIATE AGENCIES.
3. EXISTING EQUIPMENT HAS BEEN IDENTIFIED TO BE DEMOLISHED. ALL EQUIPMENT SHALL BE DEMOLISHED AND DISPOSED OF IN ACCORDANCE WITH ALL APPLICABLE REGULATIONS AND ORDINANCES. THE CONTRACTOR SHALL BE RESPONSIBLE FOR OBTAINING ALL NECESSARY PERMITS AND APPROVALS FROM THE APPROPRIATE AGENCIES.
4. THE CONTRACTOR SHALL PROVIDE ALL MATERIALS, EQUIPMENT AND LABOR REQUIRED TO COMPLETE DEMOLITION WORK.
5. CONTRACTOR SHALL PATCH AND SEAL ALL OPENINGS GENERATED BY DEMOLITION TO MATCH EXISTING CONDITIONS. CONTRACTOR SHALL PATCH TO MATCH EXISTING CONDITIONS.
6. PREPARE AND REMOVE TAP OF THE EXISTING SUPPLY AND EXHAUST SYSTEMS.
7. TEMPORARY DEMOLITION THREATS ARE NOT TO BE OBTAINED FROM ENGINEERING DEPARTMENT.

DEMOLITION PLAN NOTES

1. REMOVE EXISTING FLOOR AND ASSOCIATED DUAL TEMPERATURE SUPPLY AND RETURN PIPING IN ROOMS.
2. REMOVE EXISTING CONDENSATE PUMP AND ASSOCIATED CONNECTIONS.
3. NO CONDENSATE LINE AND RETURN PIPING IN ROOMS IS TO BE DEMOLISHED UNLESS OTHERWISE NOTED OTHERWISE.

**SOMERSET HALL
FCU REPLACEMENT**

PROJECT ADDRESS:
7567 PRENKERT DR.
COLLEGE PARK, MD
20742

SCALE:
DRAWN BY: M/ETL
CHECKED BY: P/CAL
DATE: 03/08
ISSUED FOR: 10/18/2010
REV. SUBMISSION: 12/18/2010
THIS SUBMISSION: 12/18/2010

CERTIFICATION

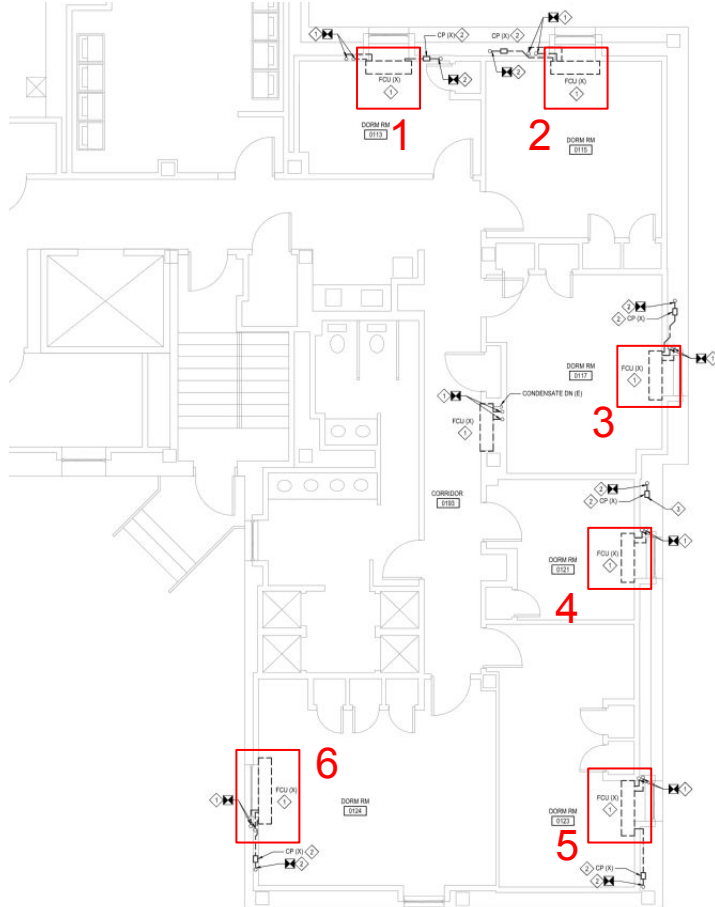
DRAWING TITLE
PARTIAL GROUND FLOOR PLAN - DEMOLITION - MECHANICAL

DRAWING NUMBER
MD-101



DIVISION OF STUDENT AFFAIRS

RESIDENTIAL FACILITIES



DEMOLITION PLAN NOTES

1. REMOVE EXISTING FCU AND ASSOCIATED DUAL TEMPERATURE SUPPLY AND RETURN PIPING BACK TO MAIN.
2. REMOVE EXISTING CONDENSATE PUMP AND ASSOCIATED CONNECTIONS.
3. NO CONDENSATE LINE WAS SEEN DURING NON DESTRUCTIVE SURVEY. IF LINE IS FOUND DURING CONSTRUCTION PLEASE REMOVE.



Assignment #4: Draw a plan of this room

When we are asked to start a project we first visit the room to be renovated and document the existing conditions. You are now an honorary PDC employee and have been sent to document this room for potential renovations.

Some tricks and tips:

- Start with the overall shape of the room
- Start in one corner work your way around the room
- Ensure you include main elements:
 - Walls
 - Doors
 - Windows
- Other elements that may be added as well:
 - Furniture
 - Finishes
 - Switches, Thermostats, etc.
 - Be as detailed or as simple as you wish